

Datasheet for ABIN7297728
anti-G3BP1 antibody (pSer232)

3 Images

[Go to Product page](#)

Overview

| | |
|----------------------|--|
| Quantity: | 100 µL |
| Target: | G3BP1 |
| Binding Specificity: | pSer232 |
| Reactivity: | Human |
| Host: | Rabbit |
| Clonality: | Polyclonal |
| Conjugate: | This G3BP1 antibody is un-conjugated |
| Application: | Western Blotting (WB), Immunohistochemistry (IHC), Immunofluorescence (IF), Immunochromatography (IC) |

Product Details

| | |
|------------------|---|
| Immunogen: | KLH-conjugated synthetic peptide encompassing a sequence within the center region of human G3BP1. |
| Specificity: | Recognizes endogenous levels of G3BP1 (pS232) protein. |
| Characteristics: | Rabbit polyclonal antibody to G3BP1 (pS232) |
| Purification: | The antibody was purified by immunogen affinity chromatography. |

Target Details

| | |
|-------------------|--|
| Target: | G3BP1 |
| Alternative Name: | G3BP1 (G3BP1 Products) |

Target Details

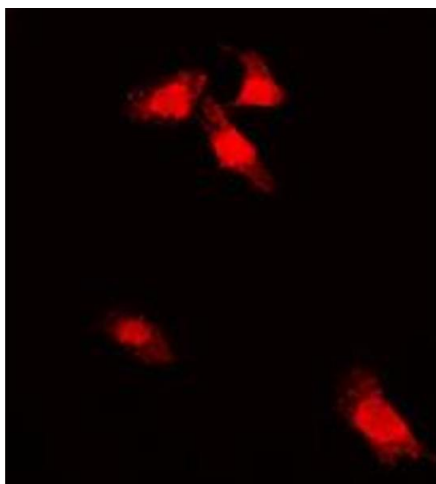
| | |
|-------------|--|
| Background: | G3BP, Ras GTPase-activating protein-binding protein 1, G3BP-1, ATP-dependent DNA helicase VIII, hDH VIII, GAP SH3 domain-binding protein 1 |
| Gene ID: | 10146 |
| UniProt: | Q13283 |
| Pathways: | SARS-CoV-2 Protein Interactome |

Application Details

| | |
|--------------------|--|
| Application Notes: | WB (1:500 - 1:1000), IH (1:100 - 1:200), IF/IC (1:100 - 1:500) |
| Restrictions: | For Research Use only |

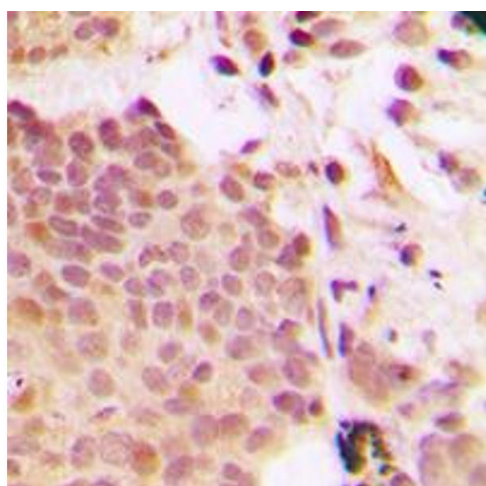
Handling

| | |
|--------------------|--|
| Format: | Liquid |
| Buffer: | Liquid in 0.42 % Potassium phosphate, 0.87 % Sodium chloride, pH 7.3, 30 % glycerol, and 0.01 % sodium azide. |
| Preservative: | Sodium azide |
| Precaution of Use: | This product contains Sodium azide: a POISONOUS AND HAZARDOUS SUBSTANCE which should be handled by trained staff only. |
| Storage: | -20 °C |
| Storage Comment: | Shipped at 4°C. Upon delivery aliquot and store at -20°C for one year. Avoid freeze/thaw cycles. |
| Expiry Date: | 12 months |



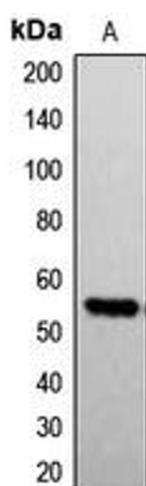
Immunofluorescence

Image 1. Immunofluorescent analysis of G3BP1 (pS232) staining in A549 cells. Formalin-fixed cells were permeabilized with 0.1% Triton X-100 in TBS for 5-10 minutes and blocked with 3% BSA-PBS for 30 minutes at room temperature. Cells were probed with the primary antibody in 3% BSA-PBS and incubated overnight at 4 °C in a humidified chamber. Cells were washed with PBST and incubated with a DyLight 594-conjugated secondary antibody (red) in PBS at room temperature in the dark. DAPI was used to stain the cell nuclei (blue).



Immunohistochemistry

Image 2. Immunohistochemical analysis of G3BP1 (pS232) staining in human breast cancer formalin fixed paraffin embedded tissue section. The section was pre-treated using heat mediated antigen retrieval with sodium citrate buffer (pH 6.0). The section was then incubated with the antibody at room temperature and detected using an HRP conjugated compact polymer system. DAB was used as the chromogen. The section was then counterstained with haematoxylin and mounted with DPX.



Western Blotting

Image 3. Western blot analysis of G3BP1 (pS232) expression in A549 (A) whole cell lysates.