



[Go to Product page](#)

Datasheet for ABIN7297732
anti-RASA4 antibody (Center)

1 Image

Overview

Quantity:	100 µL
Target:	RASA4
Binding Specificity:	Center
Reactivity:	Human, Mouse, Rat
Host:	Rabbit
Clonality:	Polyclonal
Conjugate:	This RASA4 antibody is un-conjugated
Application:	Western Blotting (WB)

Product Details

Immunogen:	KLH-conjugated synthetic peptide encompassing a sequence within the center region of human CAPRI.
Specificity:	Recognizes endogenous levels of CAPRI protein.
Characteristics:	Rabbit polyclonal antibody to CAPRI
Purification:	The antibody was purified by immunogen affinity chromatography.

Target Details

Target:	RASA4
Alternative Name:	CAPRI (RASA4 Products)
Background:	CAPRI, GAPL, KIAA0538, Ras GTPase-activating protein 4, Calcium-promoted Ras inactivator,

Target Details

Ras p21 protein activator 4, RasGAP-activating-like protein 2

Gene ID: 10156, 54153

UniProt: [O43374](#), [Q6PFQ7](#)

Application Details

Application Notes: WB (1:500 - 1:1000)

Restrictions: For Research Use only

Handling

Format: Liquid

Buffer: Liquid in 0.42 % Potassium phosphate, 0.87 % Sodium chloride, pH 7.3, 30 % glycerol, and 0.01 % sodium azide.

Preservative: Sodium azide

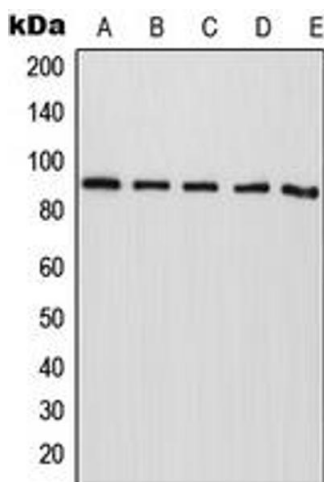
Precaution of Use: This product contains Sodium azide: a POISONOUS AND HAZARDOUS SUBSTANCE which should be handled by trained staff only.

Storage: -20 °C

Storage Comment: Shipped at 4°C. Upon delivery aliquot and store at -20°C for one year. Avoid freeze/thaw cycles.

Expiry Date: 12 months

Images



Western Blotting

Image 1. Western blot analysis of CAPRI expression in HepG2 (A), NIH3T3 (B), mouse liver (C), rat liver (D), PC12 (E) whole cell lysates.