

Datasheet for ABIN7297736  
**anti-ATP6AP2 antibody (Center)**



[Go to Product page](#)

2 Images

## Overview

Quantity:	100 µL
Target:	ATP6AP2
Binding Specificity:	Center
Reactivity:	Human, Rat, Mouse, Cow, Chicken, Dog, Pig
Host:	Rabbit
Clonality:	Polyclonal
Conjugate:	This ATP6AP2 antibody is un-conjugated
Application:	Western Blotting (WB), Immunofluorescence (IF), Immunochromatography (IC)

## Product Details

Immunogen:	KLH-conjugated synthetic peptide encompassing a sequence within the center region of human Renin Receptor.
Specificity:	Recognizes endogenous levels of Renin Receptor protein.
Characteristics:	Rabbit polyclonal antibody to Renin Receptor
Purification:	The antibody was purified by immunogen affinity chromatography.

## Target Details

Target:	ATP6AP2
Alternative Name:	Renin Receptor ( <a href="#">ATP6AP2 Products</a> )
Background:	ATP6IP2, CAPER, ELDF10, Renin receptor, ATPase H(+)-transporting lysosomal accessory

## Target Details

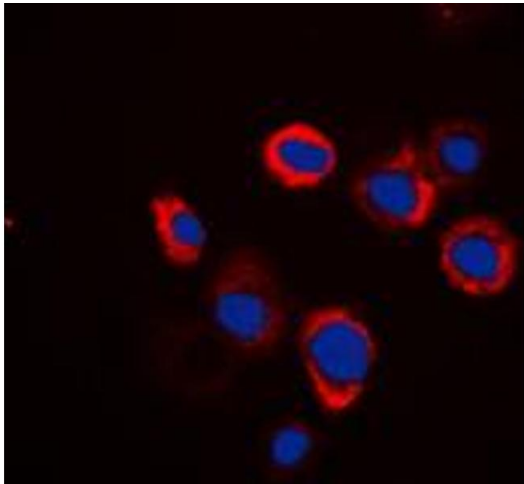
	protein 2, ATPase H(+)-transporting lysosomal-interacting protein 2, ER-localized type I transmembrane adaptor, Embryonic liver differentiation factor 10, N14F, Renin/prorenin receptor, Vacuolar ATP synthase membrane sector-associated protein M8-9, ATP6M8-9, V-ATPase M8.9 subunit
Gene ID:	10159, 70495, 302526
UniProt:	<a href="#">O75787</a> , <a href="#">Q9CYN9</a> , <a href="#">Q6AXS4</a>
Pathways:	<a href="#">ACE Inhibitor Pathway</a> , <a href="#">Peptide Hormone Metabolism</a> , <a href="#">Regulation of Systemic Arterial Blood Pressure by Hormones</a>

## Application Details

Application Notes:	WB (1:500 - 1:1000), IF/IC (1:100 - 1:500)
Restrictions:	For Research Use only

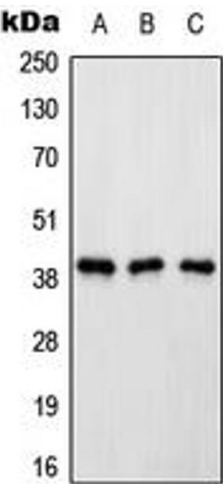
## Handling

Format:	Liquid
Buffer:	Liquid in 0.42 % Potassium phosphate, 0.87 % Sodium chloride, pH 7.3, 30 % glycerol, and 0.01 % sodium azide.
Preservative:	Sodium azide
Precaution of Use:	This product contains Sodium azide: a POISONOUS AND HAZARDOUS SUBSTANCE which should be handled by trained staff only.
Storage:	-20 °C
Storage Comment:	Shipped at 4°C. Upon delivery aliquot and store at -20°C for one year. Avoid freeze/thaw cycles.
Expiry Date:	12 months



#### Immunofluorescence

**Image 1.** Immunofluorescent analysis of Renin Receptor staining in Raw264.7 cells. Formalin-fixed cells were permeabilized with 0.1% Triton X-100 in TBS for 5-10 minutes and blocked with 3% BSA-PBS for 30 minutes at room temperature. Cells were probed with the primary antibody in 3% BSA-PBS and incubated overnight at 4 °C in a humidified chamber. Cells were washed with PBST and incubated with a DyLight 594-conjugated secondary antibody (red) in PBS at room temperature in the dark. DAPI was used to stain the cell nuclei (blue).



#### Western Blotting

**Image 2.** Western blot analysis of Renin Receptor expression in HeLa (A), Raw264.7 (B), rat kidney (C) whole cell lysates.