

Datasheet for ABIN7297768  
**anti-NDC80 antibody (Center)**



[Go to Product page](#)

1 Image

## Overview

Quantity:	100 µL
Target:	NDC80
Binding Specificity:	Center
Reactivity:	Human, Mouse, Rat, Cow, Dog, Monkey
Host:	Rabbit
Clonality:	Polyclonal
Conjugate:	This NDC80 antibody is un-conjugated
Application:	Western Blotting (WB)

## Product Details

Immunogen:	KLH-conjugated synthetic peptide encompassing a sequence within the center region of human NDC80.
Specificity:	Recognizes endogenous levels of NDC80 protein.
Characteristics:	Rabbit polyclonal antibody to NDC80
Purification:	The antibody was purified by immunogen affinity chromatography.

## Target Details

Target:	NDC80
Alternative Name:	NDC80 ( <a href="#">NDC80 Products</a> )
Background:	HEC, HEC1, KNTC2, Kinetochore protein NDC80 homolog, Highly expressed in cancer protein,

## Target Details

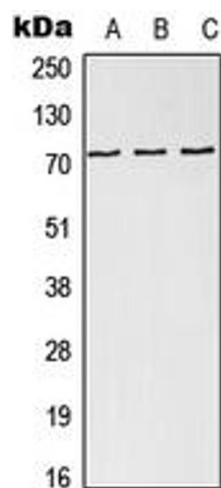
	Kinetochore protein Hec1, HsHec1, Kinetochore-associated protein 2, Retinoblastoma-associated protein HEC
Gene ID:	10403, 67052
UniProt:	<a href="#">O14777</a> , <a href="#">Q9D0F1</a>
Pathways:	<a href="#">Maintenance of Protein Location</a>

## Application Details

Application Notes:	WB (1:500 - 1:1000)
Restrictions:	For Research Use only

## Handling

Format:	Liquid
Buffer:	Liquid in 0.42 % Potassium phosphate, 0.87 % Sodium chloride, pH 7.3, 30 % glycerol, and 0.01 % sodium azide.
Preservative:	Sodium azide
Precaution of Use:	This product contains Sodium azide: a POISONOUS AND HAZARDOUS SUBSTANCE which should be handled by trained staff only.
Storage:	-20 °C
Storage Comment:	Shipped at 4°C. Upon delivery aliquot and store at -20°C for one year. Avoid freeze/thaw cycles.
Expiry Date:	12 months



Western Blotting

**Image 1.** Western blot analysis of NDC80 expression in HEK293T (A), SP2/O (B), H9C2 (C) whole cell lysates.