

Datasheet for ABIN7297770
anti-IFITM3 antibody (N-Term)



[Go to Product page](#)

2 Images

Overview

Quantity:	100 µL
Target:	IFITM3
Binding Specificity:	N-Term
Reactivity:	Human, Mouse, Rat, Pig
Host:	Rabbit
Clonality:	Polyclonal
Conjugate:	This IFITM3 antibody is un-conjugated
Application:	Western Blotting (WB), Immunofluorescence (IF), Immunochromatography (IC)

Product Details

Immunogen:	KLH-conjugated synthetic peptide encompassing a sequence within the N-term region of human IFITM3.
Specificity:	Recognizes endogenous levels of IFITM3 protein.
Characteristics:	Rabbit polyclonal antibody to IFITM3
Purification:	The antibody was purified by immunogen affinity chromatography.

Target Details

Target:	IFITM3
Alternative Name:	IFITM3 (IFITM3 Products)
Background:	Interferon-induced transmembrane protein 3, Dispanin subfamily A member 2b, DSPA2b,

Target Details

Interferon-inducible protein 1-8U

Gene ID: 10410, 66141, 361673

UniProt: [Q01628](#), [Q9CQW9](#), [P26376](#)

Application Details

Application Notes: WB (1:500 - 1:1000), IF/IC (1:100 - 1:500)

Restrictions: For Research Use only

Handling

Format: Liquid

Buffer: Liquid in 0.42 % Potassium phosphate, 0.87 % Sodium chloride, pH 7.3, 30 % glycerol, and 0.01 % sodium azide.

Preservative: Sodium azide

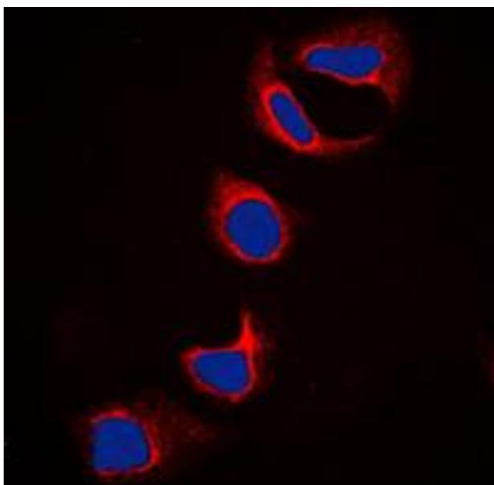
Precaution of Use: This product contains Sodium azide: a POISONOUS AND HAZARDOUS SUBSTANCE which should be handled by trained staff only.

Storage: -20 °C

Storage Comment: Shipped at 4°C. Upon delivery aliquot and store at -20°C for one year. Avoid freeze/thaw cycles.

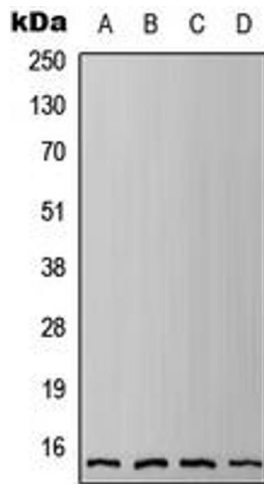
Expiry Date: 12 months

Images



Immunofluorescence

Image 1. Immunofluorescent analysis of IFITM3 staining in HeLa cells. Formalin-fixed cells were permeabilized with 0.1% Triton X-100 in TBS for 5-10 minutes and blocked with 3% BSA-PBS for 30 minutes at room temperature. Cells were probed with the primary antibody in 3% BSA-PBS and incubated overnight at 4 °C in a humidified chamber. Cells were washed with PBST and incubated with a DyLight 594-conjugated secondary antibody (red) in PBS at room temperature in the dark. DAPI was used to stain the cell



nuclei (blue).

Western Blotting

Image 2. Western blot analysis of IFITM3 expression in HEK293T (A), HeLa (B), Raw264.7 (C), H9C2 (D) whole cell lysates.