

Datasheet for ABIN7297772  
**anti-RAPGEF3 antibody (C-Term)**

## 2 Images

[Go to Product page](#)

## Overview

Quantity:	100 µL
Target:	RAPGEF3
Binding Specificity:	C-Term
Reactivity:	Human, Mouse, Rat, Cow, Dog
Host:	Rabbit
Clonality:	Polyclonal
Conjugate:	This RAPGEF3 antibody is un-conjugated
Application:	Western Blotting (WB), Immunofluorescence (IF), Immunochromatography (IC)

## Product Details

Immunogen:	KLH-conjugated synthetic peptide encompassing a sequence within the C-term region of human EPAC1.
Specificity:	Recognizes endogenous levels of EPAC1 protein.
Characteristics:	Rabbit polyclonal antibody to EPAC1
Purification:	The antibody was purified by immunogen affinity chromatography.

## Target Details

Target:	RAPGEF3
Alternative Name:	EPAC1 ( <a href="#">RAPGEF3 Products</a> )
Background:	CGEF1, EPAC, EPAC1, Rap guanine nucleotide exchange factor 3, Exchange factor directly

## Target Details

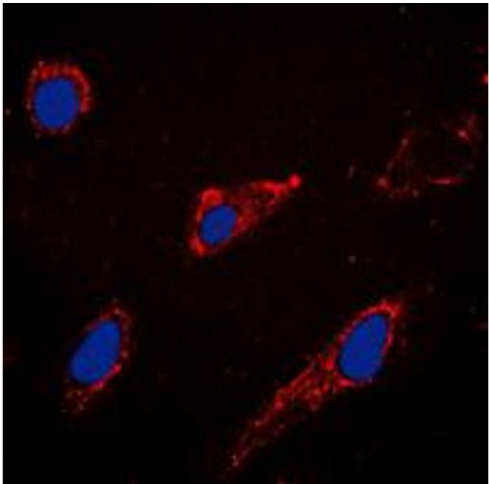
	activated by cAMP 1, Exchange protein directly activated by cAMP 1, EPAC 1, Rap1 guanine-nucleotide-exchange factor directly activated by cAMP, cAMP-regulated guanine nucleotide exchange factor I, cAMP-GEFI
Gene ID:	10411, 223864, 59326
UniProt:	<a href="#">O95398</a> , <a href="#">Q8VCC8</a> , <a href="#">Q9Z1C8</a>
Pathways:	<a href="#">cAMP Metabolic Process</a>

## Application Details

Application Notes:	WB (1:500 - 1:1000), IF/IC (1:100 - 1:500)
Restrictions:	For Research Use only

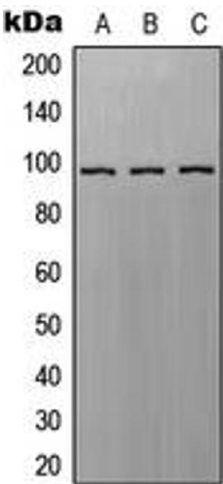
## Handling

Format:	Liquid
Buffer:	Liquid in 0.42 % Potassium phosphate, 0.87 % Sodium chloride, pH 7.3, 30 % glycerol, and 0.01 % sodium azide.
Preservative:	Sodium azide
Precaution of Use:	This product contains Sodium azide: a POISONOUS AND HAZARDOUS SUBSTANCE which should be handled by trained staff only.
Storage:	-20 °C
Storage Comment:	Shipped at 4°C. Upon delivery aliquot and store at -20°C for one year. Avoid freeze/thaw cycles.
Expiry Date:	12 months



Immunofluorescence

**Image 1.** Immunofluorescent analysis of EPAC1 staining in A549 cells. Formalin-fixed cells were permeabilized with 0.1% Triton X-100 in TBS for 5-10 minutes and blocked with 3% BSA-PBS for 30 minutes at room temperature. Cells were probed with the primary antibody in 3% BSA-PBS and incubated overnight at 4 °C in a humidified chamber. Cells were washed with PBST and incubated with a DyLight 594-conjugated secondary antibody (red) in PBS at room temperature in the dark. DAPI was used to stain the cell nuclei (blue).



Western Blotting

**Image 2.** Western blot analysis of EPAC1 expression in A549 (A), SP2/0 (B), H9C2 (C) whole cell lysates.