



[Go to Product page](#)

Datasheet for ABIN7297792
anti-SLC9A6 antibody (Center)

1 Image

Overview

Quantity:	100 µL
Target:	SLC9A6
Binding Specificity:	Center
Reactivity:	Human, Mouse, Rat, Cow, Pig, Rabbit, Chicken, Dog
Host:	Rabbit
Clonality:	Polyclonal
Conjugate:	This SLC9A6 antibody is un-conjugated
Application:	Western Blotting (WB)

Product Details

Immunogen:	KLH-conjugated synthetic peptide encompassing a sequence within the center region of human NHE6.
Specificity:	Recognizes endogenous levels of NHE6 protein.
Characteristics:	Rabbit polyclonal antibody to NHE6
Purification:	The antibody was purified by immunogen affinity chromatography.

Target Details

Target:	SLC9A6
Alternative Name:	NHE6 (SLC9A6 Products)
Background:	KIAA0267, NHE6, Sodium/hydrogen exchanger 6, Na(+)/H(+) exchanger 6, NHE-6, Solute carrier

Target Details

family 9 member 6

Gene ID: 10479

UniProt: [Q92581](#)

Application Details

Application Notes: WB (1:500 - 1:1000)

Restrictions: For Research Use only

Handling

Format: Liquid

Buffer: Liquid in 0.42 % Potassium phosphate, 0.87 % Sodium chloride, pH 7.3, 30 % glycerol, and 0.01 % sodium azide.

Preservative: Sodium azide

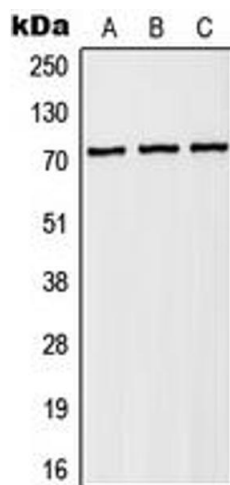
Precaution of Use: This product contains Sodium azide: a POISONOUS AND HAZARDOUS SUBSTANCE which should be handled by trained staff only.

Storage: -20 °C

Storage Comment: Shipped at 4°C. Upon delivery aliquot and store at -20°C for one year. Avoid freeze/thaw cycles.

Expiry Date: 12 months

Images



Western Blotting

Image 1. Western blot analysis of NHE6 expression in HEK293T (A), Raw264.7 (B), PC12 (C) whole cell lysates.