



[Go to Product page](#)

Datasheet for ABIN7297810  
**anti-POLR3F antibody (Center)**

1 Image

### Overview

Quantity:	100 µL
Target:	POLR3F
Binding Specificity:	Center
Reactivity:	Human, Mouse, Rat, Monkey
Host:	Rabbit
Clonality:	Polyclonal
Conjugate:	This POLR3F antibody is un-conjugated
Application:	Western Blotting (WB)

### Product Details

Immunogen:	KLH-conjugated synthetic peptide encompassing a sequence within the center region of human POLR3F.
Specificity:	Recognizes endogenous levels of POLR3F protein.
Characteristics:	Rabbit polyclonal antibody to POLR3F
Purification:	The antibody was purified by immunogen affinity chromatography.

### Target Details

Target:	POLR3F
Alternative Name:	POLR3F ( <a href="#">POLR3F Products</a> )
Background:	DNA-directed RNA polymerase III subunit RPC6, RNA polymerase III subunit C6, DNA-directed

## Target Details

RNA polymerase III subunit F, RNA polymerase III 39 kDa subunit, RPC39

Gene ID: 10621, 70408

UniProt: [Q9H1D9](#), [Q921X6](#)

## Application Details

Application Notes: WB (1:500 - 1:1000)

Restrictions: For Research Use only

## Handling

Format: Liquid

Buffer: Liquid in 0.42 % Potassium phosphate, 0.87 % Sodium chloride, pH 7.3, 30 % glycerol, and 0.01 % sodium azide.

Preservative: Sodium azide

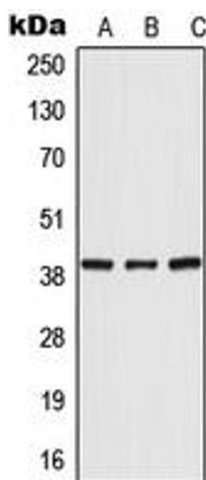
Precaution of Use: This product contains Sodium azide: a POISONOUS AND HAZARDOUS SUBSTANCE which should be handled by trained staff only.

Storage: -20 °C

Storage Comment: Shipped at 4°C. Upon delivery aliquot and store at -20°C for one year. Avoid freeze/thaw cycles.

Expiry Date: 12 months

## Images



### Western Blotting

**Image 1.** Western blot analysis of POLR3F expression in HeLa (A), mouse liver (B), rat liver (C) whole cell lysates.