

Datasheet for ABIN7297852
anti-FASTK antibody (Center)

2 Images

[Go to Product page](#)

Overview

Quantity:	100 µL
Target:	FASTK
Binding Specificity:	Center
Reactivity:	Human, Rat, Cow, Pig
Host:	Rabbit
Clonality:	Polyclonal
Conjugate:	This FASTK antibody is un-conjugated
Application:	Western Blotting (WB), Immunofluorescence (IF), Immunochromatography (IC)

Product Details

Immunogen:	KLH-conjugated synthetic peptide encompassing a sequence within the center region of human FAST Kinase.
Specificity:	Recognizes endogenous levels of FAST Kinase protein.
Characteristics:	Rabbit polyclonal antibody to FAST Kinase
Purification:	The antibody was purified by immunogen affinity chromatography.

Target Details

Target:	FASTK
Alternative Name:	FAST Kinase (FASTK Products)
Background:	Fas-activated serine/threonine kinase, FAST kinase

Target Details

Gene ID: 10922

UniProt: [Q14296](#)

Application Details

Application Notes: WB (1:500 - 1:1000), IF/IC (1:100 - 1:500)

Restrictions: For Research Use only

Handling

Format: Liquid

Buffer: Liquid in 0.42 % Potassium phosphate, 0.87 % Sodium chloride, pH 7.3, 30 % glycerol, and 0.01 % sodium azide.

Preservative: Sodium azide

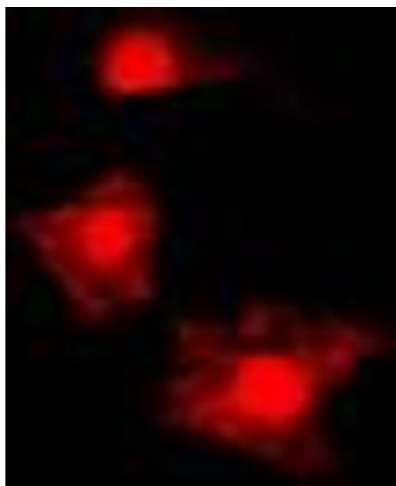
Precaution of Use: This product contains Sodium azide: a POISONOUS AND HAZARDOUS SUBSTANCE which should be handled by trained staff only.

Storage: -20 °C

Storage Comment: Shipped at 4°C. Upon delivery aliquot and store at -20°C for one year. Avoid freeze/thaw cycles.

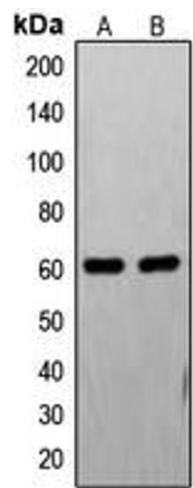
Expiry Date: 12 months

Images



Immunofluorescence

Image 1. Immunofluorescent analysis of FAST Kinase staining in HL60 cells. Formalin-fixed cells were permeabilized with 0.1% Triton X-100 in TBS for 5-10 minutes and blocked with 3% BSA-PBS for 30 minutes at room temperature. Cells were probed with the primary antibody in 3% BSA-PBS and incubated overnight at 4 °C in a humidified chamber. Cells were washed with PBST and incubated with a DyLight 594-conjugated secondary antibody (red) in PBS at room temperature in the dark. DAPI was used to stain the cell nuclei (blue).



Western Blotting

Image 2. Western blot analysis of FAST Kinase expression in PC12 (A), HL60 (B) whole cell lysates.