

Datasheet for ABIN7297872
anti-RAB31 antibody (Center)

2 Images

[Go to Product page](#)

Overview

Quantity:	100 µL
Target:	RAB31
Binding Specificity:	Center
Reactivity:	Human, Mouse, Rat, Cow, Pig
Host:	Rabbit
Clonality:	Polyclonal
Conjugate:	This RAB31 antibody is un-conjugated
Application:	Western Blotting (WB), Immunofluorescence (IF), Immunochromatography (IC)

Product Details

Immunogen:	KLH-conjugated synthetic peptide encompassing a sequence within the center region of human RAB31.
Specificity:	Recognizes endogenous levels of RAB31 protein.
Characteristics:	Rabbit polyclonal antibody to RAB31
Purification:	The antibody was purified by immunogen affinity chromatography.

Target Details

Target:	RAB31
Alternative Name:	RAB31 (RAB31 Products)
Background:	RAB22B, Ras-related protein Rab-31, Ras-related protein Rab-22B

Target Details

Gene ID: 11031, 106572, 246324

UniProt: [Q13636](#), [Q921E2](#), [Q6GQP4](#)

Application Details

Application Notes: WB (1:500 - 1:1000), IF/IC (1:100 - 1:500)

Restrictions: For Research Use only

Handling

Format: Liquid

Buffer: Liquid in 0.42 % Potassium phosphate, 0.87 % Sodium chloride, pH 7.3, 30 % glycerol, and 0.01 % sodium azide.

Preservative: Sodium azide

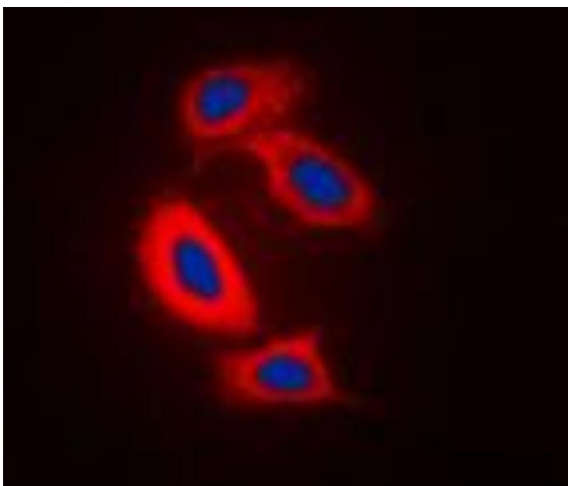
Precaution of Use: This product contains Sodium azide: a POISONOUS AND HAZARDOUS SUBSTANCE which should be handled by trained staff only.

Storage: -20 °C

Storage Comment: Shipped at 4°C. Upon delivery aliquot and store at -20°C for one year. Avoid freeze/thaw cycles.

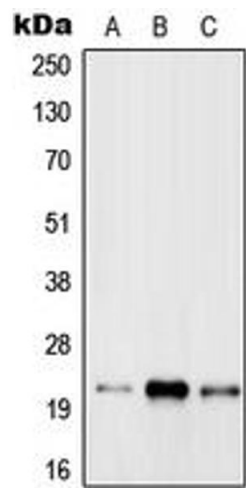
Expiry Date: 12 months

Images



Immunofluorescence

Image 1. Immunofluorescent analysis of RAB31 staining in Raw264.7 cells. Formalin-fixed cells were permeabilized with 0.1% Triton X-100 in TBS for 5-10 minutes and blocked with 3% BSA-PBS for 30 minutes at room temperature. Cells were probed with the primary antibody in 3% BSA-PBS and incubated overnight at 4 °C in a humidified chamber. Cells were washed with PBST and incubated with a DyLight 594-conjugated secondary antibody (red) in PBS at room temperature in the dark. DAPI was used to stain the cell nuclei (blue).



Western Blotting

Image 2. Western blot analysis of RAB31 expression in MCF7 (A), Raw264.7 (B), rat brain (C) whole cell lysates.