



Datasheet for ABIN7297884
anti-MYST2 antibody (Center)



[Go to Product page](#)

2 Images

Overview

Quantity:	100 µL
Target:	MYST2
Binding Specificity:	Center
Reactivity:	Human, Mouse, Rat, Dog, Cow, Chicken, Pig, Zebrafish (Danio rerio)
Host:	Rabbit
Clonality:	Polyclonal
Conjugate:	This MYST2 antibody is un-conjugated
Application:	Western Blotting (WB), Immunofluorescence (IF), Immunochromatography (IC)

Product Details

Immunogen:	KLH-conjugated synthetic peptide encompassing a sequence within the center region of human KAT7.
Specificity:	Recognizes endogenous levels of KAT7 protein.
Characteristics:	Rabbit polyclonal antibody to KAT7
Purification:	The antibody was purified by immunogen affinity chromatography.

Target Details

Target:	MYST2
Alternative Name:	KAT7 (MYST2 Products)
Background:	HBO1, HBOa, MYST2, Histone acetyltransferase KAT7, Histone acetyltransferase binding to

Target Details

ORC1, Lysine acetyltransferase 7, MOZ, YBF2/SAS3, SAS2 and TIP60 protein 2, MYST-2

Gene ID: 11143, 217127, 303470

UniProt: [O95251](#), [Q5SVQ0](#), [Q810T5](#)

Application Details

Application Notes: WB (1:500 - 1:1000), IF/IC (1:100 - 1:500)

Restrictions: For Research Use only

Handling

Format: Liquid

Buffer: Liquid in 0.42 % Potassium phosphate, 0.87 % Sodium chloride, pH 7.3, 30 % glycerol, and 0.01 % sodium azide.

Preservative: Sodium azide

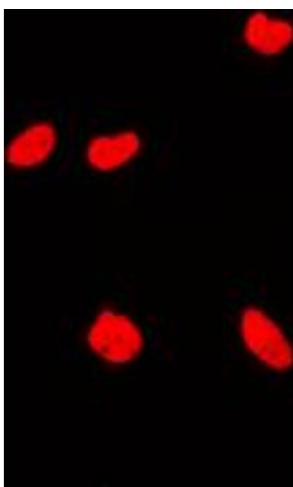
Precaution of Use: This product contains Sodium azide: a POISONOUS AND HAZARDOUS SUBSTANCE which should be handled by trained staff only.

Storage: -20 °C

Storage Comment: Shipped at 4°C. Upon delivery aliquot and store at -20°C for one year. Avoid freeze/thaw cycles.

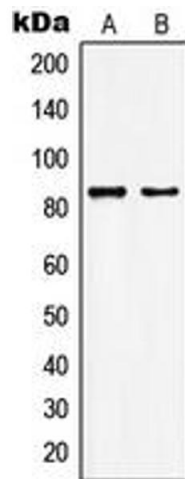
Expiry Date: 12 months

Images



Immunofluorescence

Image 1. Immunofluorescent analysis of KAT7 staining in MCF7 cells. Formalin-fixed cells were permeabilized with 0.1% Triton X-100 in TBS for 5-10 minutes and blocked with 3% BSA-PBS for 30 minutes at room temperature. Cells were probed with the primary antibody in 3% BSA-PBS and incubated overnight at 4 °C in a humidified chamber. Cells were washed with PBST and incubated with a DyLight 594-conjugated secondary antibody (red) in PBS at room temperature in the dark. DAPI was used to stain the cell



nuclei (blue).

Western Blotting

Image 2. Western blot analysis of KAT7 expression in HepG2 (A), MCF7 (B) whole cell lysates.