

Datasheet for ABIN7297908  
**anti-PARK7/DJ1 antibody (Center)**



[Go to Product page](#)

**3** Images

## Overview

Quantity:	100 µL
Target:	PARK7/DJ1 (PARK7)
Binding Specificity:	Center
Reactivity:	Human, Cow, Pig
Host:	Rabbit
Clonality:	Polyclonal
Conjugate:	This PARK7/DJ1 antibody is un-conjugated
Application:	Western Blotting (WB), Immunohistochemistry (IHC), Immunofluorescence (IF), Immunochromatography (IC)

## Product Details

Immunogen:	KLH-conjugated synthetic peptide encompassing a sequence within the center region of human DJ-1.
Specificity:	Recognizes endogenous levels of DJ-1 protein.
Characteristics:	Rabbit polyclonal antibody to DJ-1
Purification:	The antibody was purified by immunogen affinity chromatography.

## Target Details

Target:	PARK7/DJ1 (PARK7)
Alternative Name:	DJ-1 ( <a href="#">PARK7 Products</a> )

### Target Details

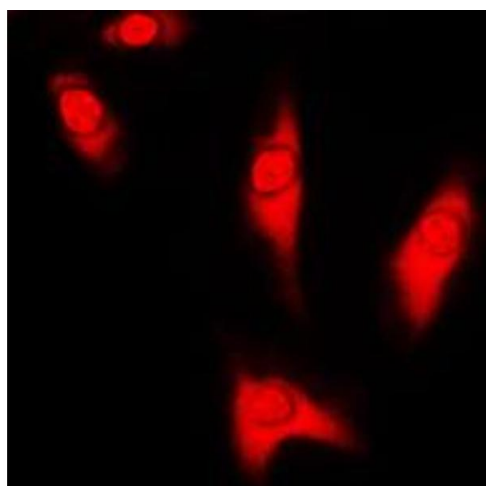
Background:	Protein DJ-1, Oncogene DJ1, Parkinson disease protein 7
Gene ID:	11315
UniProt:	<a href="#">Q99497</a>
Pathways:	<a href="#">Intracellular Steroid Hormone Receptor Signaling Pathway</a> , <a href="#">Regulation of Intracellular Steroid Hormone Receptor Signaling</a> , <a href="#">Proton Transport</a>

### Application Details

Application Notes:	WB (1:500 - 1:1000), IH (1:100 - 1:200), IF/IC (1:100 - 1:500)
Restrictions:	For Research Use only

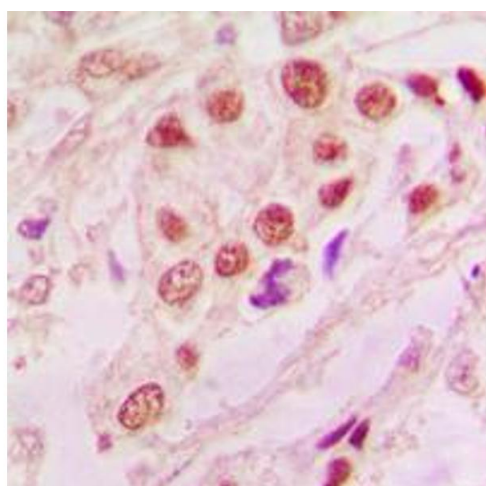
### Handling

Format:	Liquid
Buffer:	Liquid in 0.42 % Potassium phosphate, 0.87 % Sodium chloride, pH 7.3, 30 % glycerol, and 0.01 % sodium azide.
Preservative:	Sodium azide
Precaution of Use:	This product contains Sodium azide: a POISONOUS AND HAZARDOUS SUBSTANCE which should be handled by trained staff only.
Storage:	-20 °C
Storage Comment:	Shipped at 4°C. Upon delivery aliquot and store at -20°C for one year. Avoid freeze/thaw cycles.
Expiry Date:	12 months



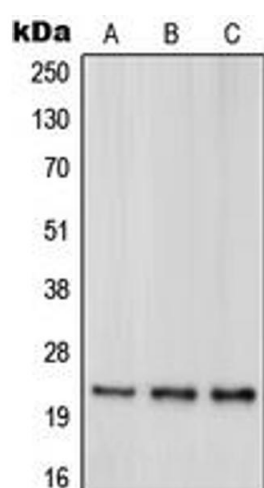
### Immunofluorescence

**Image 1.** Immunofluorescent analysis of DJ-1 staining in HeLa cells. Formalin-fixed cells were permeabilized with 0.1% Triton X-100 in TBS for 5-10 minutes and blocked with 3% BSA-PBS for 30 minutes at room temperature. Cells were probed with the primary antibody in 3% BSA-PBS and incubated overnight at 4 °C in a humidified chamber. Cells were washed with PBST and incubated with a DyLight 594-conjugated secondary antibody (red) in PBS at room temperature in the dark. DAPI was used to stain the cell nuclei (blue).



### Immunohistochemistry

**Image 2.** Immunohistochemical analysis of DJ-1 staining in human lung cancer formalin fixed paraffin embedded tissue section. The section was pre-treated using heat mediated antigen retrieval with sodium citrate buffer (pH 6.0). The section was then incubated with the antibody at room temperature and detected using an HRP conjugated compact polymer system. DAB was used as the chromogen. The section was then counterstained with haematoxylin and mounted with DPX.



### Western Blotting

**Image 3.** Western blot analysis of DJ-1 expression in HeLa (A), HEK293T (B), Jurkat (C) whole cell lysates.