

Datasheet for ABIN7297912

anti-Cortactin antibody (C-Term)**3** Images[Go to Product page](#)

Overview

Quantity:	100 µL
Target:	Cortactin (CTTN)
Binding Specificity:	C-Term
Reactivity:	Human, Mouse
Host:	Rabbit
Clonality:	Polyclonal
Conjugate:	This Cortactin antibody is un-conjugated
Application:	Western Blotting (WB), Immunohistochemistry (IHC), Immunofluorescence (IF), Immunochromatography (IC)

Product Details

Immunogen:	KLH-conjugated synthetic peptide encompassing a sequence within the C-term region of human Cortactin.
Specificity:	Recognizes endogenous levels of Cortactin protein.
Characteristics:	Rabbit polyclonal antibody to Cortactin
Purification:	The antibody was purified by immunogen affinity chromatography.

Target Details

Target:	Cortactin (CTTN)
Alternative Name:	Cortactin (CTTN Products)

Target Details

Background:	EMS1, Src substrate cortactin, Amplexin, Oncogene EMS1
Gene ID:	2017, 13043
UniProt:	Q14247 , Q60598
Pathways:	MAPK Signaling

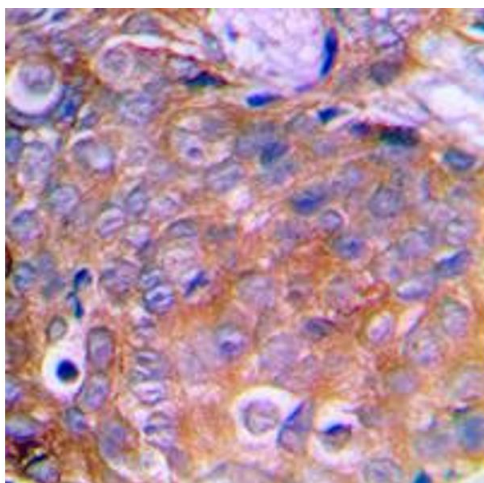
Application Details

Application Notes:	WB (1:500 - 1:1000), IH (1:100 - 1:200), IF/IC (1:100 - 1:500)
Restrictions:	For Research Use only

Handling

Format:	Liquid
Buffer:	Liquid in 0.42 % Potassium phosphate, 0.87 % Sodium chloride, pH 7.3, 30 % glycerol, and 0.01 % sodium azide.
Preservative:	Sodium azide
Precaution of Use:	This product contains Sodium azide: a POISONOUS AND HAZARDOUS SUBSTANCE which should be handled by trained staff only.
Storage:	-20 °C
Storage Comment:	Shipped at 4°C. Upon delivery aliquot and store at -20°C for one year. Avoid freeze/thaw cycles.
Expiry Date:	12 months

Images



Immunohistochemistry

Image 1. Immunohistochemical analysis of Cortactin staining in human breast cancer formalin fixed paraffin embedded tissue section. The section was pre-treated using heat mediated antigen retrieval with sodium citrate buffer (pH 6.0). The section was then incubated with the antibody at room temperature and detected using an HRP conjugated compact polymer system. DAB was used as the chromogen. The section was then counterstained with

haematoxylin and mounted with DPX.

Immunofluorescence

Image 2. Immunofluorescent analysis of Cortactin staining in MCF7 cells. Formalin-fixed cells were permeabilized with 0.1% Triton X-100 in TBS for 5-10 minutes and blocked with 3% BSA-PBS for 30 minutes at room temperature. Cells were probed with the primary antibody in 3% BSA-PBS and incubated overnight at 4 °C in a humidified chamber. Cells were washed with PBST and incubated with a DyLight 594-conjugated secondary antibody (red) in PBS at room temperature in the dark. DAPI was used to stain the cell nuclei (blue).

Western Blotting

Image 3. Western blot analysis of Cortactin expression in MCF7 (A), C6 (B), A431 (C), HeLa (D) whole cell lysates.

