



[Go to Product page](#)

Datasheet for ABIN7297924

anti-MAPRE3 antibody (C-Term)

1 Image

Overview

Quantity:	100 µL
Target:	MAPRE3
Binding Specificity:	C-Term
Reactivity:	Human, Mouse, Rat, Cow, Monkey
Host:	Rabbit
Clonality:	Polyclonal
Conjugate:	This MAPRE3 antibody is un-conjugated
Application:	Western Blotting (WB)

Product Details

Immunogen:	KLH-conjugated synthetic peptide encompassing a sequence within the C-term region of human EB3.
Specificity:	Recognizes endogenous levels of EB3 protein.
Characteristics:	Rabbit polyclonal antibody to EB3
Purification:	The antibody was purified by immunogen affinity chromatography.

Target Details

Target:	MAPRE3
Alternative Name:	EB3 (MAPRE3 Products)
Background:	Microtubule-associated protein RP/EB family member 3, EB1 protein family member 3, EBF3,

Target Details

End-binding protein 3, EB3, RP3

Gene ID: 22924, 100732, 298848

UniProt: [Q9UPY8](#), [Q6PER3](#), [Q5XIT1](#)

Application Details

Application Notes: WB (1:500 - 1:1000)

Restrictions: For Research Use only

Handling

Format: Liquid

Buffer: Liquid in 0.42 % Potassium phosphate, 0.87 % Sodium chloride, pH 7.3, 30 % glycerol, and 0.01 % sodium azide.

Preservative: Sodium azide

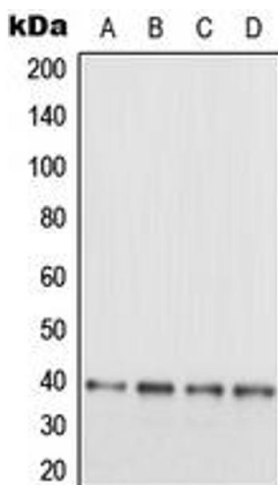
Precaution of Use: This product contains Sodium azide: a POISONOUS AND HAZARDOUS SUBSTANCE which should be handled by trained staff only.

Storage: -20 °C

Storage Comment: Shipped at 4°C. Upon delivery aliquot and store at -20°C for one year. Avoid freeze/thaw cycles.

Expiry Date: 12 months

Images



Western Blotting

Image 1. Western blot analysis of EB3 expression in SHSY5Y (A), HeLa (B), SP2/0 (C), PC12 (D) whole cell lysates.