

Datasheet for ABIN7297976  
**anti-ANP32D antibody (N-Term)**[Go to Product page](#)

## 1 Image

## Overview

Quantity:	100 µL
Target:	ANP32D
Binding Specificity:	N-Term
Reactivity:	Human, Mouse, Rat, Cow, Dog, Zebrafish (Danio rerio)
Host:	Rabbit
Clonality:	Polyclonal
Conjugate:	This ANP32D antibody is un-conjugated
Application:	Western Blotting (WB)

## Product Details

Immunogen:	KLH-conjugated synthetic peptide encompassing a sequence within the N-term region of human ANP32D.
Specificity:	Recognizes endogenous levels of ANP32D protein.
Characteristics:	Rabbit polyclonal antibody to ANP32D
Purification:	The antibody was purified by immunogen affinity chromatography.

## Target Details

Target:	ANP32D
Alternative Name:	ANP32D ( <a href="#">ANP32D Products</a> )
Background:	PP32R2, Acidic leucine-rich nuclear phosphoprotein 32 family member D, Phosphoprotein 32-

## Target Details

	related protein 2, Tumorigenic protein pp32r2
Gene ID:	23519
UniProt:	<a href="#">O95626</a>

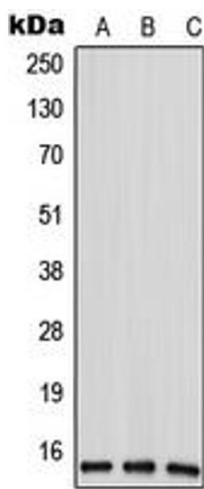
## Application Details

Application Notes:	WB (1:500 - 1:1000)
Restrictions:	For Research Use only

## Handling

Format:	Liquid
Buffer:	Liquid in 0.42 % Potassium phosphate, 0.87 % Sodium chloride, pH 7.3, 30 % glycerol, and 0.01 % sodium azide.
Preservative:	Sodium azide
Precaution of Use:	This product contains Sodium azide: a POISONOUS AND HAZARDOUS SUBSTANCE which should be handled by trained staff only.
Storage:	-20 °C
Storage Comment:	Shipped at 4°C. Upon delivery aliquot and store at -20°C for one year. Avoid freeze/thaw cycles.
Expiry Date:	12 months

## Images



### Western Blotting

**Image 1.** Western blot analysis of ANP32D expression in HeLa (A), mouse liver (B), rat liver (C) whole cell lysates.