

Datasheet for ABIN7297980
anti-IB2 antibody (C-Term)[Go to Product page](#)

3 Images

Overview

Quantity:	100 µL
Target:	IB2 (JIP-2)
Binding Specificity:	C-Term
Reactivity:	Human, Rat, Mouse, Zebrafish (Danio rerio)
Host:	Rabbit
Clonality:	Polyclonal
Conjugate:	This IB2 antibody is un-conjugated
Application:	Western Blotting (WB), Immunohistochemistry (IHC), Immunofluorescence (IF), Immunochromatography (IC)

Product Details

Immunogen:	KLH-conjugated synthetic peptide encompassing a sequence within the C-term region of human JIP2.
Specificity:	Recognizes endogenous levels of JIP2 protein.
Characteristics:	Rabbit polyclonal antibody to JIP2
Purification:	The antibody was purified by immunogen affinity chromatography.

Target Details

Target:	IB2 (JIP-2)
Alternative Name:	JIP2 (JIP-2 Products)

Target Details

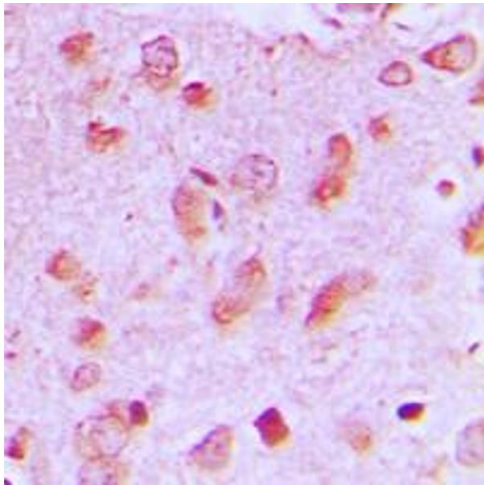
Background:	IB2, JIP2, PRKM8IPL, C-Jun-amino-terminal kinase-interacting protein 2, JIP-2, JNK-interacting protein 2, Islet-brain-2, IB-2, JNK MAP kinase scaffold protein 2, Mitogen-activated protein kinase 8-interacting protein 2
Gene ID:	23542, 60597
UniProt:	Q13387 , Q9ERE9

Application Details

Application Notes:	WB (1:500 - 1:1000), IH (1:100 - 1:200), IF/IC (1:100 - 1:500)
Restrictions:	For Research Use only

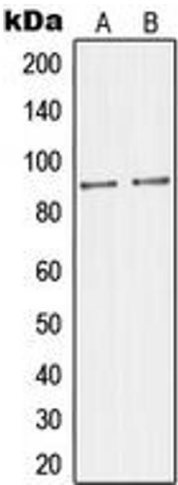
Handling

Format:	Liquid
Buffer:	Liquid in 0.42 % Potassium phosphate, 0.87 % Sodium chloride, pH 7.3, 30 % glycerol, and 0.01 % sodium azide.
Preservative:	Sodium azide
Precaution of Use:	This product contains Sodium azide: a POISONOUS AND HAZARDOUS SUBSTANCE which should be handled by trained staff only.
Storage:	-20 °C
Storage Comment:	Shipped at 4°C. Upon delivery aliquot and store at -20°C for one year. Avoid freeze/thaw cycles.
Expiry Date:	12 months



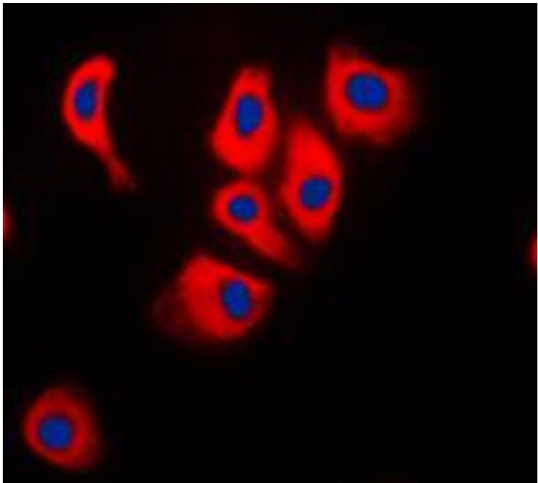
Immunohistochemistry

Image 1. Immunohistochemical analysis of JIP2 staining in human brain formalin fixed paraffin embedded tissue section. The section was pre-treated using heat mediated antigen retrieval with sodium citrate buffer (pH 6.0). The section was then incubated with the antibody at room temperature and detected using an HRP conjugated compact polymer system. DAB was used as the chromogen. The section was then counterstained with haematoxylin and mounted with DPX.



Western Blotting

Image 2. Western blot analysis of JIP2 expression in Raw264.7 (A), mouse brain (B) whole cell lysates.



Immunofluorescence

Image 3. Immunofluorescent analysis of JIP2 staining in Raw264.7 cells. Formalin-fixed cells were permeabilized with 0.1% Triton X-100 in TBS for 5-10 minutes and blocked with 3% BSA-PBS for 30 minutes at room temperature. Cells were probed with the primary antibody in 3% BSA-PBS and incubated overnight at 4 °C in a humidified chamber. Cells were washed with PBST and incubated with a DyLight 594-conjugated secondary antibody (red) in PBS at room temperature in the dark. DAPI was used to stain the cell nuclei (blue).