

Datasheet for ABIN7297986
anti-SMUG1 antibody (Center)[Go to Product page](#)

2 Images

Overview

Quantity:	100 µL
Target:	SMUG1
Binding Specificity:	Center
Reactivity:	Human, Mouse, Rat, Monkey
Host:	Rabbit
Clonality:	Polyclonal
Conjugate:	This SMUG1 antibody is un-conjugated
Application:	Western Blotting (WB), Immunofluorescence (IF), Immunochromatography (IC)

Product Details

Immunogen:	KLH-conjugated synthetic peptide encompassing a sequence within the center region of human SMUG1.
Specificity:	Recognizes endogenous levels of SMUG1 protein.
Characteristics:	Rabbit polyclonal antibody to SMUG1
Purification:	The antibody was purified by immunogen affinity chromatography.

Target Details

Target:	SMUG1
Alternative Name:	SMUG1 (SMUG1 Products)
Background:	Single-strand selective monofunctional uracil DNA glycosylase

Target Details

Gene ID: 23583, 71726, 315344

UniProt: [Q53HV7](#), [Q6P5C5](#), [Q811Q1](#)

Pathways: [DNA Damage Repair](#)

Application Details

Application Notes: WB (1:500 - 1:1000), IF/IC (1:100 - 1:500)

Restrictions: For Research Use only

Handling

Format: Liquid

Buffer: Liquid in 0.42 % Potassium phosphate, 0.87 % Sodium chloride, pH 7.3, 30 % glycerol, and 0.01 % sodium azide.

Preservative: Sodium azide

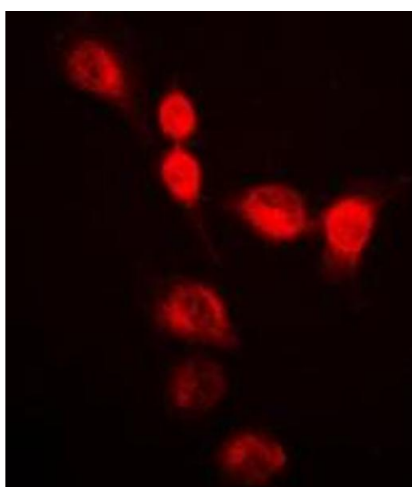
Precaution of Use: This product contains Sodium azide: a POISONOUS AND HAZARDOUS SUBSTANCE which should be handled by trained staff only.

Storage: -20 °C

Storage Comment: Shipped at 4°C. Upon delivery aliquot and store at -20°C for one year. Avoid freeze/thaw cycles.

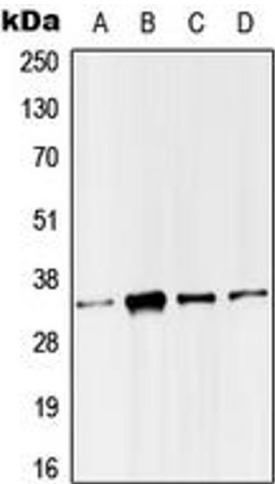
Expiry Date: 12 months

Images



Immunofluorescence

Image 1. Immunofluorescent analysis of SMUG1 staining in HeLa cells. Formalin-fixed cells were permeabilized with 0.1% Triton X-100 in TBS for 5-10 minutes and blocked with 3% BSA-PBS for 30 minutes at room temperature. Cells were probed with the primary antibody in 3% BSA-PBS and incubated overnight at 4 °C in a humidified chamber. Cells were washed with PBST and incubated with a DyLight 594-conjugated secondary antibody (red) in PBS at room temperature in the dark. DAPI was used to stain the cell



nuclei (blue).

Western Blotting

Image 2. Western blot analysis of SMUG1 expression in HeLa (A), Molt4 (B), Raw264.7 (C), H9C2 (D) whole cell lysates.