

Datasheet for ABIN7297996

anti-Apolipoprotein L 2 antibody (Center)

3 Images



[Go to Product page](#)

Overview

Quantity:	100 µL
Target:	Apolipoprotein L 2 (APOL2)
Binding Specificity:	Center
Reactivity:	Human, Rat, Mouse
Host:	Rabbit
Clonality:	Polyclonal
Conjugate:	This Apolipoprotein L 2 antibody is un-conjugated
Application:	Western Blotting (WB), Immunohistochemistry (IHC), Immunofluorescence (IF), Immunochromatography (IC)

Product Details

Immunogen:	KLH-conjugated synthetic peptide encompassing a sequence within the center region of human Apolipoprotein L2.
Specificity:	Recognizes endogenous levels of Apolipoprotein L2 protein.
Characteristics:	Rabbit polyclonal antibody to Apolipoprotein L2
Purification:	The antibody was purified by immunogen affinity chromatography.

Target Details

Target:	Apolipoprotein L 2 (APOL2)
Alternative Name:	Apolipoprotein L2 (APOL2 Products)

Target Details

Background:	Apolipoprotein L2, Apolipoprotein L-II, ApoL-II
Gene ID:	23780
UniProt:	Q9BQE5
Pathways:	The Global Phosphorylation Landscape of SARS-CoV-2 Infection

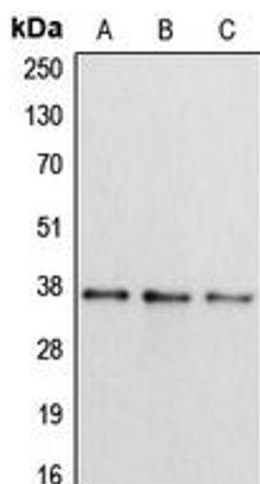
Application Details

Application Notes:	WB (1:500 - 1:1000), IH (1:100 - 1:200), IF/IC (1:100 - 1:500)
Restrictions:	For Research Use only

Handling

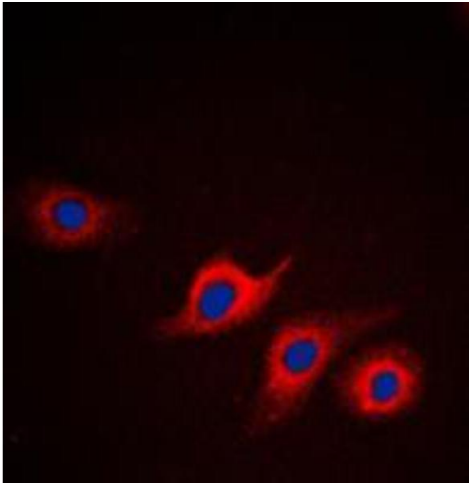
Format:	Liquid
Buffer:	Liquid in 0.42 % Potassium phosphate, 0.87 % Sodium chloride, pH 7.3, 30 % glycerol, and 0.01 % sodium azide.
Preservative:	Sodium azide
Precaution of Use:	This product contains Sodium azide: a POISONOUS AND HAZARDOUS SUBSTANCE which should be handled by trained staff only.
Storage:	-20 °C
Storage Comment:	Shipped at 4°C. Upon delivery aliquot and store at -20°C for one year. Avoid freeze/thaw cycles.
Expiry Date:	12 months

Images



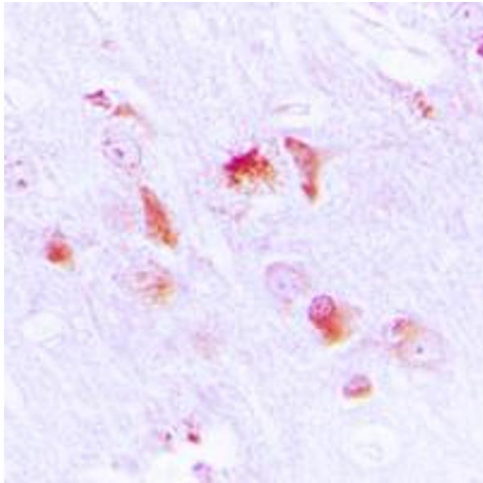
Western Blotting

Image 1. Western blot analysis of Apolipoprotein L2 expression in HepG2 (A), mouse liver (B), rat brain (C) whole cell lysates.



Immunofluorescence

Image 2. Immunofluorescent analysis of Apolipoprotein L2 staining in HepG2 cells. Formalin-fixed cells were permeabilized with 0.1% Triton X-100 in TBS for 5-10 minutes and blocked with 3% BSA-PBS for 30 minutes at room temperature. Cells were probed with the primary antibody in 3% BSA-PBS and incubated overnight at 4 °C in a humidified chamber. Cells were washed with PBST and incubated with a DyLight 594-conjugated secondary antibody (red) in PBS at room temperature in the dark. DAPI was used to stain the cell nuclei (blue).



Immunohistochemistry

Image 3. Immunohistochemical analysis of Apolipoprotein L2 staining in human brain formalin fixed paraffin embedded tissue section. The section was pre-treated using heat mediated antigen retrieval with sodium citrate buffer (pH 6.0). The section was then incubated with the antibody at room temperature and detected using an HRP conjugated compact polymer system. DAB was used as the chromogen. The section was then counterstained with haematoxylin and mounted with DPX.