

Datasheet for ABIN7297998  
**anti-KIF4A antibody (C-Term)**[Go to Product page](#)

## 2 Images

## Overview

Quantity:	100 µL
Target:	KIF4A
Binding Specificity:	C-Term
Reactivity:	Human, Mouse, Monkey
Host:	Rabbit
Clonality:	Polyclonal
Conjugate:	This KIF4A antibody is un-conjugated
Application:	Western Blotting (WB), Immunofluorescence (IF), Immunochromatography (IC)

## Product Details

Immunogen:	KLH-conjugated synthetic peptide encompassing a sequence within the C-term region of human KIF4A.
Specificity:	Recognizes endogenous levels of KIF4A protein.
Characteristics:	Rabbit polyclonal antibody to KIF4A
Purification:	The antibody was purified by immunogen affinity chromatography.

## Target Details

Target:	KIF4A
Alternative Name:	KIF4A ( <a href="#">KIF4A Products</a> )
Background:	KIF4, Chromosome-associated kinesin KIF4A, Chromokinesin-A

## Target Details

Gene ID: 24137

UniProt: [O95239](#)

## Application Details

Application Notes: WB (1:500 - 1:1000), IF/IC (1:100 - 1:500)

Restrictions: For Research Use only

## Handling

Format: Liquid

Buffer: Liquid in 0.42 % Potassium phosphate, 0.87 % Sodium chloride, pH 7.3, 30 % glycerol, and 0.01 % sodium azide.

Preservative: Sodium azide

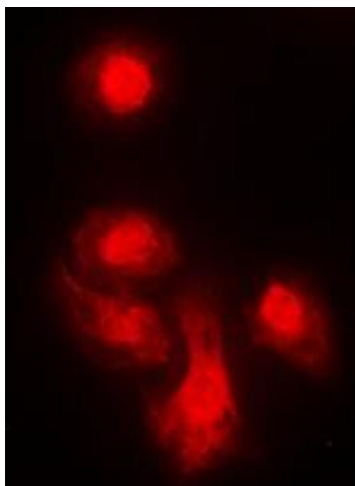
Precaution of Use: This product contains Sodium azide: a POISONOUS AND HAZARDOUS SUBSTANCE which should be handled by trained staff only.

Storage: -20 °C

Storage Comment: Shipped at 4°C. Upon delivery aliquot and store at -20°C for one year. Avoid freeze/thaw cycles.

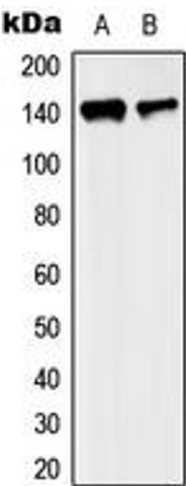
Expiry Date: 12 months

## Images



### Immunofluorescence

**Image 1.** Immunofluorescent analysis of KIF4A staining in MCF7 cells. Formalin-fixed cells were permeabilized with 0.1% Triton X-100 in TBS for 5-10 minutes and blocked with 3% BSA-PBS for 30 minutes at room temperature. Cells were probed with the primary antibody in 3% BSA-PBS and incubated overnight at 4 °C in a humidified chamber. Cells were washed with PBST and incubated with a DyLight 594-conjugated secondary antibody (red) in PBS at room temperature in the dark. DAPI was used to stain the cell nuclei (blue).



Western Blotting

**Image 2.** Western blot analysis of KIF4A expression in MCF7 (A), SP2/0 (B) whole cell lysates.