

Datasheet for ABIN7298000  
**anti-SHC2 antibody (Center)**



[Go to Product page](#)

1 Image

## Overview

Quantity:	100 µL
Target:	SHC2
Binding Specificity:	Center
Reactivity:	Human, Rat, Mouse, Monkey
Host:	Rabbit
Clonality:	Polyclonal
Conjugate:	This SHC2 antibody is un-conjugated
Application:	Western Blotting (WB), Immunoprecipitation (IP)

## Product Details

Immunogen:	KLH-conjugated synthetic peptide encompassing a sequence within the center region of human SHCB.
Specificity:	Recognizes endogenous levels of SHCB protein.
Characteristics:	Rabbit polyclonal antibody to SHCB
Purification:	The antibody was purified by immunogen affinity chromatography.

## Target Details

Target:	SHC2
Alternative Name:	SHCB ( <a href="#">SHC2 Products</a> )
Background:	SCK, SHCB, SHC-transforming protein 2, Protein Sck, SHC-transforming protein B, Src

## Target Details

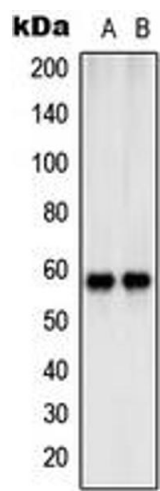
	homology 2 domain-containing-transforming protein C2, SH2 domain protein C2
Gene ID:	25759, 216148, 314612
UniProt:	<a href="#">P98077</a> , <a href="#">Q8BMC3</a> , <a href="#">O70142</a>
Pathways:	<a href="#">RTK Signaling</a> , <a href="#">Neurotrophin Signaling Pathway</a> , <a href="#">Signaling Events mediated by VEGFR1 and VEGFR2</a> , <a href="#">VEGFR1 Specific Signals</a> , <a href="#">VEGF Signaling</a>

## Application Details

Application Notes:	WB (1:500 - 1:1000), IP (1:10 - 1:100)
Restrictions:	For Research Use only

## Handling

Format:	Liquid
Buffer:	Liquid in 0.42 % Potassium phosphate, 0.87 % Sodium chloride, pH 7.3, 30 % glycerol, and 0.01 % sodium azide.
Preservative:	Sodium azide
Precaution of Use:	This product contains Sodium azide: a POISONOUS AND HAZARDOUS SUBSTANCE which should be handled by trained staff only.
Storage:	-20 °C
Storage Comment:	Shipped at 4°C. Upon delivery aliquot and store at -20°C for one year. Avoid freeze/thaw cycles.
Expiry Date:	12 months



Western Blotting

**Image 1.** Western blot analysis of SHCB expression in Jurkat (A), NIH3T3 (B) whole cell lysates.