

Datasheet for ABIN7298002
anti-SLC24A2 antibody (Center)[Go to Product page](#)

1 Image

Overview

Quantity:	100 µL
Target:	SLC24A2
Binding Specificity:	Center
Reactivity:	Human, Mouse, Rat, Monkey
Host:	Rabbit
Clonality:	Polyclonal
Conjugate:	This SLC24A2 antibody is un-conjugated
Application:	Western Blotting (WB)

Product Details

Immunogen:	KLH-conjugated synthetic peptide encompassing a sequence within the center region of human NCKX2.
Specificity:	Recognizes endogenous levels of NCKX2 protein.
Characteristics:	Rabbit polyclonal antibody to NCKX2
Purification:	The antibody was purified by immunogen affinity chromatography.

Target Details

Target:	SLC24A2
Alternative Name:	NCKX2 (SLC24A2 Products)
Background:	NCKX2, Sodium/potassium/calcium exchanger 2, Na(+)/K(+)/Ca(2+)-exchange protein 2,

Target Details

	Retinal cone Na-Ca+K exchanger, Solute carrier family 24 member 2
Gene ID:	25769, 84550
UniProt:	Q9UI40 , O54701

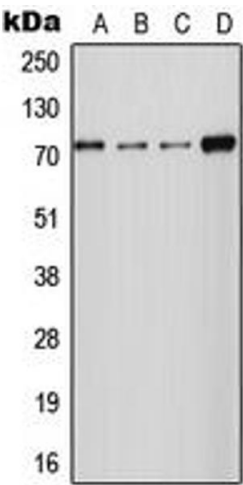
Application Details

Application Notes:	WB (1:500 - 1:1000)
Restrictions:	For Research Use only

Handling

Format:	Liquid
Buffer:	Liquid in 0.42 % Potassium phosphate, 0.87 % Sodium chloride, pH 7.3, 30 % glycerol, and 0.01 % sodium azide.
Preservative:	Sodium azide
Precaution of Use:	This product contains Sodium azide: a POISONOUS AND HAZARDOUS SUBSTANCE which should be handled by trained staff only.
Storage:	-20 °C
Storage Comment:	Shipped at 4°C. Upon delivery aliquot and store at -20°C for one year. Avoid freeze/thaw cycles.
Expiry Date:	12 months

Images



Western Blotting

Image 1. Western blot analysis of NCKX2 expression in HT1080 (A), MCF7 (B), Raw264.7 (C), PC12 (D) whole cell lysates.