

Datasheet for ABIN7298008
anti-TNFAIP8 antibody (Center)

3 Images

1 Publication

[Go to Product page](#)

Overview

Quantity:	100 µL
Target:	TNFAIP8
Binding Specificity:	Center
Reactivity:	Human, Mouse, Rat, Chicken, Cow, Pig
Host:	Rabbit
Clonality:	Polyclonal
Conjugate:	This TNFAIP8 antibody is un-conjugated
Application:	Western Blotting (WB), Immunohistochemistry (IHC), Immunofluorescence (IF), Immunochromatography (IC)

Product Details

Immunogen:	KLH-conjugated synthetic peptide encompassing a sequence within the center region of human SCC-S2.
Specificity:	Recognizes endogenous levels of SCC-S2 protein.
Characteristics:	Rabbit polyclonal antibody to SCC-S2
Purification:	The antibody was purified by immunogen affinity chromatography.

Target Details

Target:	TNFAIP8
Alternative Name:	SCC-S2 (TNFAIP8 Products)

Target Details

Background:	Tumor necrosis factor alpha-induced protein 8, TNF alpha-induced protein 8, Head and neck tumor and metastasis-related protein, MDC-3.13, NF-kappa-B-inducible DED-containing protein, NDED, SCC-S2, TNF-induced protein GG2-1
Gene ID:	25816, 106869
UniProt:	O95379 , Q921Z5

Application Details

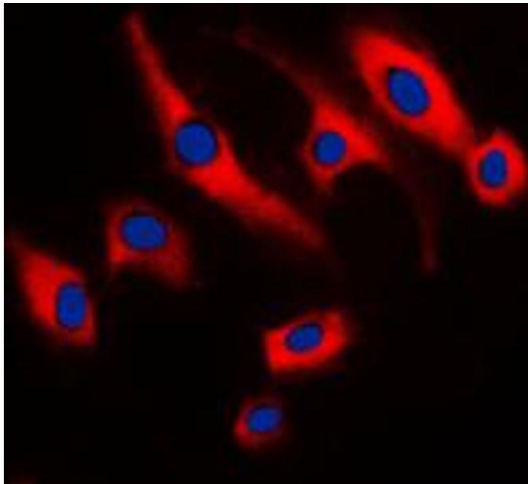
Application Notes:	WB (1:500 - 1:1000), IH (1:100 - 1:200), IF/IC (1:100 - 1:500)
Restrictions:	For Research Use only

Handling

Format:	Liquid
Buffer:	Liquid in 0.42 % Potassium phosphate, 0.87 % Sodium chloride, pH 7.3, 30 % glycerol, and 0.01 % sodium azide.
Preservative:	Sodium azide
Precaution of Use:	This product contains Sodium azide: a POISONOUS AND HAZARDOUS SUBSTANCE which should be handled by trained staff only.
Storage:	-20 °C
Storage Comment:	Shipped at 4°C. Upon delivery aliquot and store at -20°C for one year. Avoid freeze/thaw cycles.
Expiry Date:	12 months

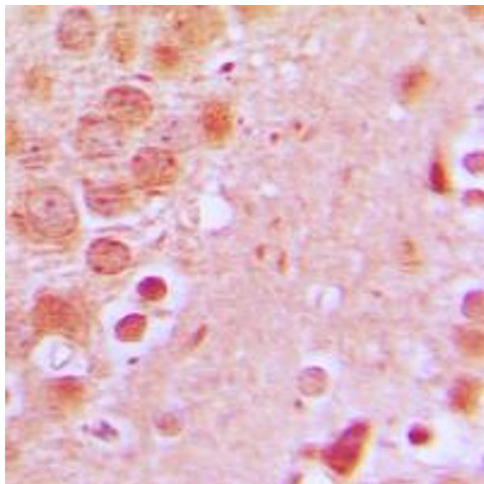
Publications

Product cited in:	Cadinoiu, Rata, Daraba, Ichim, Popescu, Solcan, Solcan: "Silver Nanoparticles Biocomposite Films with Antimicrobial Activity: In Vitro and In Vivo Tests." in: International journal of molecular sciences , Vol. 23, Issue 18, (2022) (PubMed).
-------------------	---



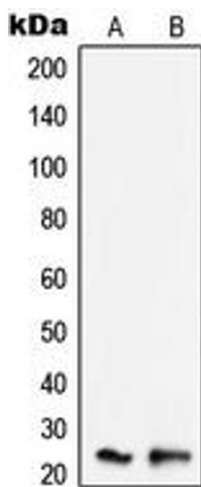
Immunofluorescence

Image 1. Immunofluorescent analysis of SCC-S2 staining in Raw264.7 cells. Formalin-fixed cells were permeabilized with 0.1% Triton X-100 in TBS for 5-10 minutes and blocked with 3% BSA-PBS for 30 minutes at room temperature. Cells were probed with the primary antibody in 3% BSA-PBS and incubated overnight at 4 °C in a humidified chamber. Cells were washed with PBST and incubated with a DyLight 594-conjugated secondary antibody (red) in PBS at room temperature in the dark. DAPI was used to stain the cell nuclei (blue).



Immunohistochemistry

Image 2. Immunohistochemical analysis of SCC-S2 staining in human brain formalin fixed paraffin embedded tissue section. The section was pre-treated using heat mediated antigen retrieval with sodium citrate buffer (pH 6.0). The section was then incubated with the antibody at room temperature and detected using an HRP conjugated compact polymer system. DAB was used as the chromogen. The section was then counterstained with haematoxylin and mounted with DPX.



Western Blotting

Image 3. Western blot analysis of SCC-S2 expression in K562 (A), Raw264.7 (B) whole cell lysates.