

Datasheet for ABIN7298020
anti-RPL36 antibody (Center)

3 Images

[Go to Product page](#)

Overview

| | |
|----------------------|--|
| Quantity: | 100 µL |
| Target: | RPL36 |
| Binding Specificity: | Center |
| Reactivity: | Human, Mouse, Rat, Cow, Chicken |
| Host: | Rabbit |
| Clonality: | Polyclonal |
| Conjugate: | This RPL36 antibody is un-conjugated |
| Application: | Western Blotting (WB), Immunohistochemistry (IHC), Immunofluorescence (IF), Immunochromatography (IC) |

Product Details

| | |
|------------------|---|
| Immunogen: | KLH-conjugated synthetic peptide encompassing a sequence within the center region of human RPL36. |
| Specificity: | Recognizes endogenous levels of RPL36 protein. |
| Characteristics: | Rabbit polyclonal antibody to RPL36 |
| Purification: | The antibody was purified by immunogen affinity chromatography. |

Target Details

| | |
|-------------------|--|
| Target: | RPL36 |
| Alternative Name: | RPL36 (RPL36 Products) |

Target Details

| | |
|-------------|--|
| Background: | 60S ribosomal protein L36 |
| Gene ID: | 25873, 58927 |
| UniProt: | Q9Y3U8 , P47964 , P39032 |
| Pathways: | SARS-CoV-2 Protein Interactome |

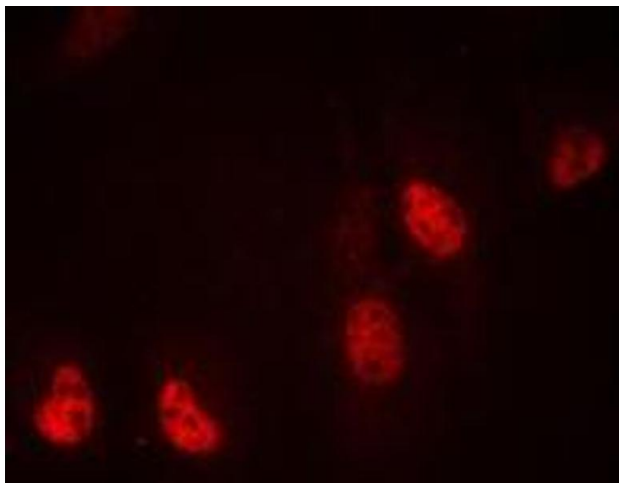
Application Details

| | |
|--------------------|--|
| Application Notes: | WB (1:500 - 1:1000), IH (1:100 - 1:200), IF/IC (1:100 - 1:500) |
| Restrictions: | For Research Use only |

Handling

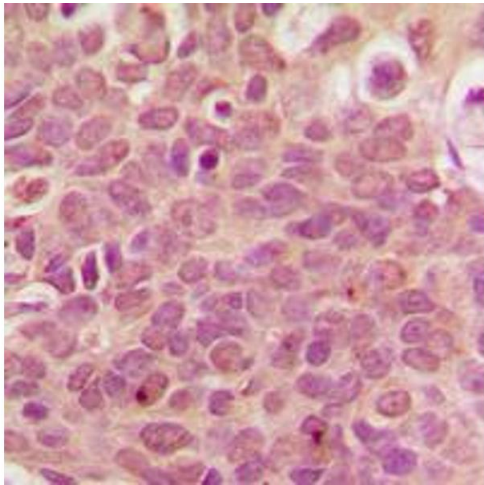
| | |
|--------------------|--|
| Format: | Liquid |
| Buffer: | Liquid in 0.42 % Potassium phosphate, 0.87 % Sodium chloride, pH 7.3, 30 % glycerol, and 0.01 % sodium azide. |
| Preservative: | Sodium azide |
| Precaution of Use: | This product contains Sodium azide: a POISONOUS AND HAZARDOUS SUBSTANCE which should be handled by trained staff only. |
| Storage: | -20 °C |
| Storage Comment: | Shipped at 4°C. Upon delivery aliquot and store at -20°C for one year. Avoid freeze/thaw cycles. |
| Expiry Date: | 12 months |

Images



Immunofluorescence

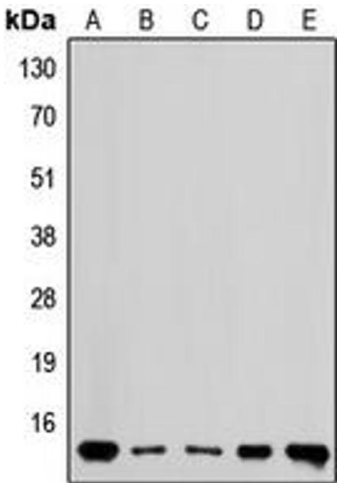
Image 1. Immunofluorescent analysis of RPL36 staining in MDAMB435 cells. Formalin-fixed cells were permeabilized with 0.1% Triton X-100 in TBS for 5-10 minutes and blocked with 3% BSA-PBS for 30 minutes at room temperature. Cells were probed with the primary antibody in 3% BSA-PBS and incubated overnight at 4 °C in a humidified chamber. Cells were washed with PBST and incubated with a DyLight 594-conjugated secondary antibody (red) in PBS at room



temperature in the dark. DAPI was used to stain the cell nuclei (blue).

Immunohistochemistry

Image 2. Immunohistochemical analysis of RPL36 staining in human breast cancer formalin fixed paraffin embedded tissue section. The section was pre-treated using heat mediated antigen retrieval with sodium citrate buffer (pH 6.0). The section was then incubated with the antibody at room temperature and detected using an HRP conjugated compact polymer system. DAB was used as the chromogen. The section was then counterstained with haematoxylin and mounted with DPX.



Western Blotting

Image 3. Western blot analysis of RPL36 expression in MDAMB435 (A), HEK293 (B), Raw264.7 (C), mouse brain (D), rat brain (E) whole cell lysates.