

Datasheet for ABIN7298022
anti-Adlcan antibody (N-Term)[Go to Product page](#)

1 Image

Overview

Quantity:	100 µL
Target:	Adlcan
Binding Specificity:	N-Term
Reactivity:	Human, Mouse, Rat, Monkey
Host:	Rabbit
Clonality:	Polyclonal
Conjugate:	This Adlcan antibody is un-conjugated
Application:	Western Blotting (WB)

Product Details

Immunogen:	KLH-conjugated synthetic peptide encompassing a sequence within the N-term region of human MXRA5.
Specificity:	Recognizes endogenous levels of MXRA5 protein.
Characteristics:	Rabbit polyclonal antibody to MXRA5
Purification:	The antibody was purified by immunogen affinity chromatography.

Target Details

Target:	Adlcan
Alternative Name:	MXRA5 (Adlcan Products)
Background:	Matrix-remodeling-associated protein 5, Adhesion protein with leucine-rich repeats and

Target Details

	immunoglobulin domains related to perlecan, Adlican
Gene ID:	25878
UniProt:	Q9NR99

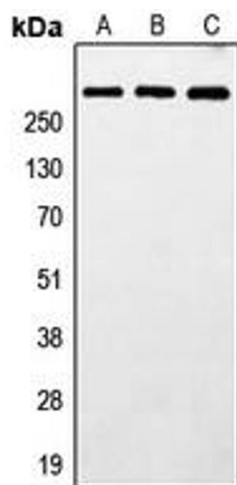
Application Details

Application Notes:	WB (1:500 - 1:1000)
Restrictions:	For Research Use only

Handling

Format:	Liquid
Buffer:	Liquid in 0.42 % Potassium phosphate, 0.87 % Sodium chloride, pH 7.3, 30 % glycerol, and 0.01 % sodium azide.
Preservative:	Sodium azide
Precaution of Use:	This product contains Sodium azide: a POISONOUS AND HAZARDOUS SUBSTANCE which should be handled by trained staff only.
Storage:	-20 °C
Storage Comment:	Shipped at 4°C. Upon delivery aliquot and store at -20°C for one year. Avoid freeze/thaw cycles.
Expiry Date:	12 months

Images



Western Blotting

Image 1. Western blot analysis of MXRA5 expression in HeLa (A), SP2/0 (B), PC12 (C) whole cell lysates.