



Datasheet for ABIN7298036
anti-SENP3 antibody (N-Term)



[Go to Product page](#)

2 Images

Overview

Quantity:	100 µL
Target:	SENP3
Binding Specificity:	N-Term
Reactivity:	Human, Monkey
Host:	Rabbit
Clonality:	Polyclonal
Conjugate:	This SENP3 antibody is un-conjugated
Application:	Western Blotting (WB), Immunohistochemistry (IHC)

Product Details

Immunogen:	KLH-conjugated synthetic peptide encompassing a sequence within the N-term region of human SENP3.
Specificity:	Recognizes endogenous levels of SENP3 protein.
Characteristics:	Rabbit polyclonal antibody to SENP3
Purification:	The antibody was purified by immunogen affinity chromatography.

Target Details

Target:	SENP3
Alternative Name:	SENP3 (SENP3 Products)
Background:	SSP3, SUSP3, Sentrin-specific protease 3, SUMO-1-specific protease 3, Sentrin/SUMO-specific

Target Details

protease SENP3

Gene ID: 26168

UniProt: [Q9H4L4](#)

Application Details

Application Notes: WB (1:500 - 1:1000), IH (1:100 - 1:200)

Restrictions: For Research Use only

Handling

Format: Liquid

Buffer: Liquid in 0.42 % Potassium phosphate, 0.87 % Sodium chloride, pH 7.3, 30 % glycerol, and 0.01 % sodium azide.

Preservative: Sodium azide

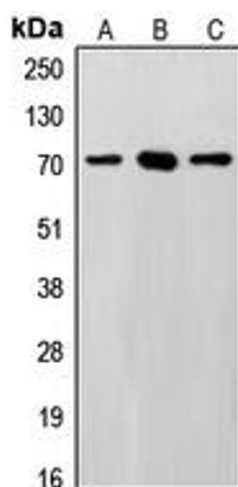
Precaution of Use: This product contains Sodium azide: a POISONOUS AND HAZARDOUS SUBSTANCE which should be handled by trained staff only.

Storage: -20 °C

Storage Comment: Shipped at 4°C. Upon delivery aliquot and store at -20°C for one year. Avoid freeze/thaw cycles.

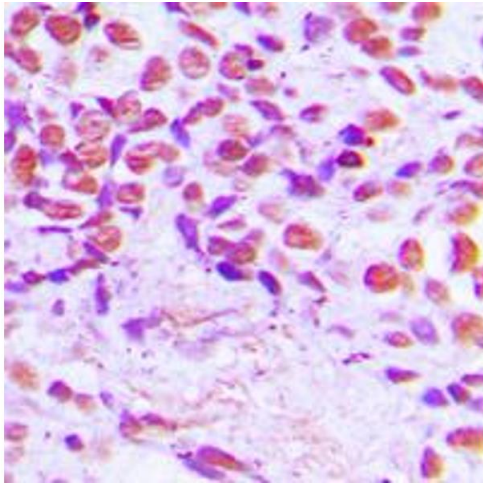
Expiry Date: 12 months

Images



Western Blotting

Image 1. Western blot analysis of SENP3 expression in HeLa (A), MCF7 (B), Saos2 (C) whole cell lysates.



Immunohistochemistry

Image 2. Immunohistochemical analysis of SENP3 staining in human breast cancer formalin fixed paraffin embedded tissue section. The section was pre-treated using heat mediated antigen retrieval with sodium citrate buffer (pH 6.0). The section was then incubated with the antibody at room temperature and detected using an HRP conjugated compact polymer system. DAB was used as the chromogen. The section was then counterstained with haematoxylin and mounted with DPX.