

Datasheet for ABIN7298038  
**anti-OPTC antibody (C-Term)**[Go to Product page](#)

## 1 Image

## Overview

Quantity:	100 µL
Target:	OPTC
Binding Specificity:	C-Term
Reactivity:	Human, Mouse, Rat, Pig
Host:	Rabbit
Clonality:	Polyclonal
Conjugate:	This OPTC antibody is un-conjugated
Application:	Western Blotting (WB)

## Product Details

Immunogen:	KLH-conjugated synthetic peptide encompassing a sequence within the C-term region of human Opticin.
Specificity:	Recognizes endogenous levels of Opticin protein.
Characteristics:	Rabbit polyclonal antibody to Opticin
Purification:	The antibody was purified by immunogen affinity chromatography.

## Target Details

Target:	OPTC
Alternative Name:	Opticin ( <a href="#">OPTC Products</a> )
Background:	OPT, Opticin, Oculoglycan

### Target Details

Gene ID:	26254, 269120
UniProt:	<a href="#">Q9UBM4</a> , <a href="#">Q920A0</a>

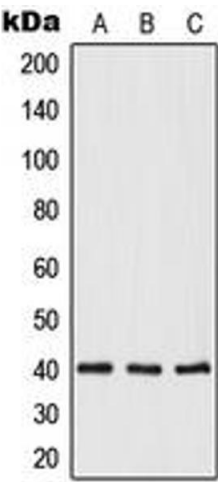
### Application Details

Application Notes:	WB (1:500 - 1:1000)
Restrictions:	For Research Use only

### Handling

Format:	Liquid
Buffer:	Liquid in 0.42 % Potassium phosphate, 0.87 % Sodium chloride, pH 7.3, 30 % glycerol, and 0.01 % sodium azide.
Preservative:	Sodium azide
Precaution of Use:	This product contains Sodium azide: a POISONOUS AND HAZARDOUS SUBSTANCE which should be handled by trained staff only.
Storage:	-20 °C
Storage Comment:	Shipped at 4°C. Upon delivery aliquot and store at -20°C for one year. Avoid freeze/thaw cycles.
Expiry Date:	12 months

### Images



#### Western Blotting

**Image 1.** Western blot analysis of Opticin expression in HeLa (A), mouse heart (B), rat heart (C) whole cell lysates.