

Datasheet for ABIN7298048
anti-MRPL46 antibody (Center)[Go to Product page](#)

2 Images

Overview

Quantity:	100 µL
Target:	MRPL46
Binding Specificity:	Center
Reactivity:	Human, Monkey
Host:	Rabbit
Clonality:	Polyclonal
Conjugate:	This MRPL46 antibody is un-conjugated
Application:	Western Blotting (WB), Immunohistochemistry (IHC)

Product Details

Immunogen:	KLH-conjugated synthetic peptide encompassing a sequence within the center region of human MRPL46.
Specificity:	Recognizes endogenous levels of MRPL46 protein.
Characteristics:	Rabbit polyclonal antibody to MRPL46
Purification:	The antibody was purified by immunogen affinity chromatography.

Target Details

Target:	MRPL46
Alternative Name:	MRPL46 (MRPL46 Products)
Background:	C15orf4, LIECG2, 39S ribosomal protein L46, mitochondrial, L46mt, MRP-L46, P2ECSL

Target Details

Gene ID: 26589

UniProt: [Q9H2W6](#)

Application Details

Application Notes: WB (1:500 - 1:1000), IH (1:100 - 1:200)

Restrictions: For Research Use only

Handling

Format: Liquid

Buffer: Liquid in 0.42 % Potassium phosphate, 0.87 % Sodium chloride, pH 7.3, 30 % glycerol, and 0.01 % sodium azide.

Preservative: Sodium azide

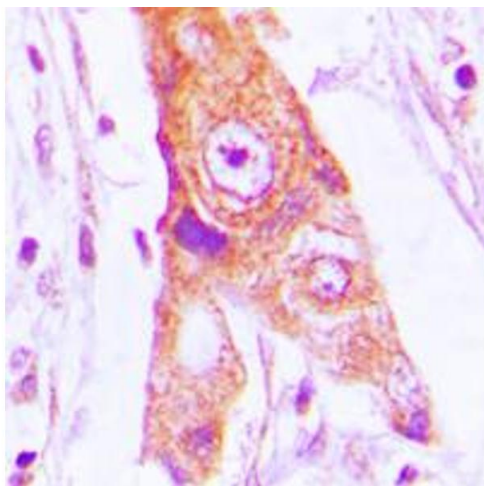
Precaution of Use: This product contains Sodium azide: a POISONOUS AND HAZARDOUS SUBSTANCE which should be handled by trained staff only.

Storage: -20 °C

Storage Comment: Shipped at 4°C. Upon delivery aliquot and store at -20°C for one year. Avoid freeze/thaw cycles.

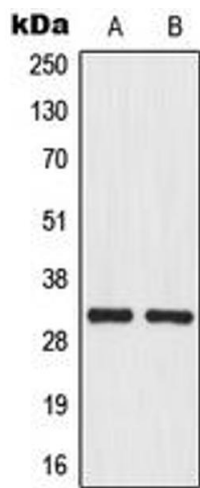
Expiry Date: 12 months

Images



Immunohistochemistry

Image 1. Immunohistochemical analysis of MRPL46 staining in human lung cancer formalin fixed paraffin embedded tissue section. The section was pre-treated using heat mediated antigen retrieval with sodium citrate buffer (pH 6.0). The section was then incubated with the antibody at room temperature and detected using an HRP conjugated compact polymer system. DAB was used as the chromogen. The section was then counterstained with haematoxylin and mounted with DPX.



Western Blotting

Image 2. Western blot analysis of MRPL46 expression in U251MG (A), HepG2 (B) whole cell lysates.