

Datasheet for ABIN7298062  
**anti-ATP5S antibody (Center)**



[Go to Product page](#)

1 Image

## Overview

Quantity:	100 µL
Target:	ATP5S
Binding Specificity:	Center
Reactivity:	Human, Mouse, Rat, Monkey
Host:	Rabbit
Clonality:	Polyclonal
Conjugate:	This ATP5S antibody is un-conjugated
Application:	Western Blotting (WB)

## Product Details

Immunogen:	KLH-conjugated synthetic peptide encompassing a sequence within the center region of human ATP5S.
Specificity:	Recognizes endogenous levels of ATP5S protein.
Characteristics:	Rabbit polyclonal antibody to ATP5S
Purification:	The antibody was purified by immunogen affinity chromatography.

## Target Details

Target:	ATP5S
Alternative Name:	ATP5S ( <a href="#">ATP5S Products</a> )
Background:	ATPW, ATP synthase subunit s, mitochondrial, ATP synthase-coupling factor B, FB,

Target Details

	Mitochondrial ATP synthase regulatory component factor B
Gene ID:	27109, 68055, 362749
UniProt:	<a href="#">Q99766</a> , <a href="#">Q9CRA7</a> , <a href="#">Q5XIM4</a>
Pathways:	<a href="#">Proton Transport</a> , <a href="#">Ribonucleoside Biosynthetic Process</a>

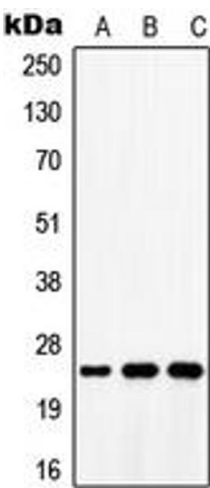
Application Details

Application Notes:	WB (1:500 - 1:1000)
Restrictions:	For Research Use only

Handling

Format:	Liquid
Buffer:	Liquid in 0.42 % Potassium phosphate, 0.87 % Sodium chloride, pH 7.3, 30 % glycerol, and 0.01 % sodium azide.
Preservative:	Sodium azide
Precaution of Use:	This product contains Sodium azide: a POISONOUS AND HAZARDOUS SUBSTANCE which should be handled by trained staff only.
Storage:	-20 °C
Storage Comment:	Shipped at 4°C. Upon delivery aliquot and store at -20°C for one year. Avoid freeze/thaw cycles.
Expiry Date:	12 months

Images



**Western Blotting**

**Image 1.** Western blot analysis of ATP5S expression in MCF7 (A), mouse lung (B), rat lung (C) whole cell lysates.