

Datasheet for ABIN7298116
anti-FBLN4 antibody (Center)

3 Images

[Go to Product page](#)

Overview

Quantity:	100 µL
Target:	FBLN4
Binding Specificity:	Center
Reactivity:	Human
Host:	Rabbit
Clonality:	Polyclonal
Conjugate:	This FBLN4 antibody is un-conjugated
Application:	Western Blotting (WB), Immunohistochemistry (IHC), Immunofluorescence (IF), Immunochromatography (IC)

Product Details

Immunogen:	KLH-conjugated synthetic peptide encompassing a sequence within the center region of human Fibulin 4.
Specificity:	Recognizes endogenous levels of Fibulin 4 protein.
Characteristics:	Rabbit polyclonal antibody to Fibulin 4
Purification:	The antibody was purified by immunogen affinity chromatography.

Target Details

Target:	FBLN4
Alternative Name:	Fibulin 4 (FBLN4 Products)

Target Details

Background:	FBLN4, EGF-containing fibulin-like extracellular matrix protein 2, Fibulin-4, FIBL-4, Protein UPH1
Gene ID:	30008
UniProt:	O95967

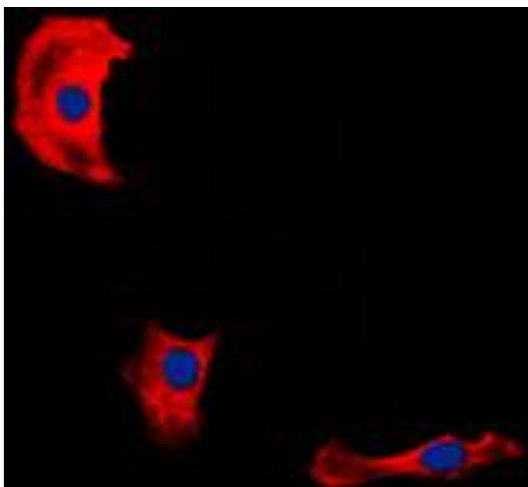
Application Details

Application Notes:	WB (1:500 - 1:1000), IH (1:100 - 1:200), IF/IC (1:100 - 1:500)
Restrictions:	For Research Use only

Handling

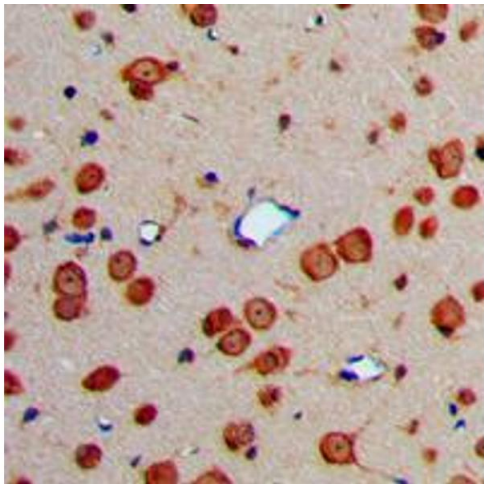
Format:	Liquid
Buffer:	Liquid in 0.42 % Potassium phosphate, 0.87 % Sodium chloride, pH 7.3, 30 % glycerol, and 0.01 % sodium azide.
Preservative:	Sodium azide
Precaution of Use:	This product contains Sodium azide: a POISONOUS AND HAZARDOUS SUBSTANCE which should be handled by trained staff only.
Storage:	-20 °C
Storage Comment:	Shipped at 4°C. Upon delivery aliquot and store at -20°C for one year. Avoid freeze/thaw cycles.
Expiry Date:	12 months

Images



Immunofluorescence

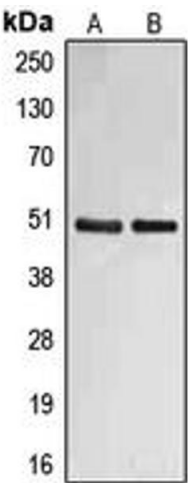
Image 1. Immunofluorescent analysis of Fibulin 4 staining in HepG2 cells. Formalin-fixed cells were permeabilized with 0.1% Triton X-100 in TBS for 5-10 minutes and blocked with 3% BSA-PBS for 30 minutes at room temperature. Cells were probed with the primary antibody in 3% BSA-PBS and incubated overnight at 4 °C in a humidified chamber. Cells were washed with PBST and incubated with a DyLight 594-conjugated secondary antibody (red) in PBS at room temperature in the dark. DAPI was used to stain the cell



nuclei (blue).

Immunohistochemistry

Image 2. Immunohistochemical analysis of Fibulin 4 staining in human brain formalin fixed paraffin embedded tissue section. The section was pre-treated using heat mediated antigen retrieval with sodium citrate buffer (pH 6.0). The section was then incubated with the antibody at room temperature and detected using an HRP conjugated compact polymer system. DAB was used as the chromogen. The section was then counterstained with haematoxylin and mounted with DPX.



Western Blotting

Image 3. Western blot analysis of Fibulin 4 expression in SW480 (A), HepG2 (B) whole cell lysates.