



[Go to Product page](#)

Datasheet for ABIN7298138

anti-CYP39A1 antibody (C-Term)

2 Images

Overview

Quantity:	100 µL
Target:	CYP39A1
Binding Specificity:	C-Term
Reactivity:	Human, Monkey, Pig
Host:	Rabbit
Clonality:	Polyclonal
Conjugate:	This CYP39A1 antibody is un-conjugated
Application:	Western Blotting (WB), Immunohistochemistry (IHC)

Product Details

Immunogen:	KLH-conjugated synthetic peptide encompassing a sequence within the C-term region of human Cytochrome P450 39A1.
Specificity:	Recognizes endogenous levels of Cytochrome P450 39A1 protein.
Characteristics:	Rabbit polyclonal antibody to Cytochrome P450 39A1
Purification:	The antibody was purified by immunogen affinity chromatography.

Target Details

Target:	CYP39A1
Alternative Name:	Cytochrome P450 39A1 (CYP39A1 Products)
Background:	24-hydroxycholesterol 7-alpha-hydroxylase, Cytochrome P450 39A1, hCYP39A1, Oxysterol 7-

Target Details

	alpha-hydroxylase
Gene ID:	51302
UniProt:	Q9NYL5
Pathways:	Monocarboxylic Acid Catabolic Process

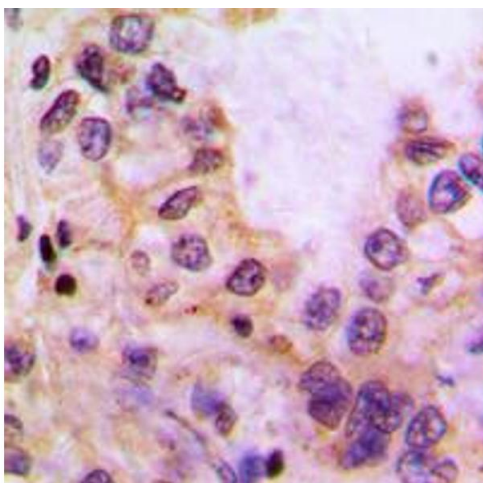
Application Details

Application Notes:	WB (1:500 - 1:1000), IH (1:100 - 1:200)
Restrictions:	For Research Use only

Handling

Format:	Liquid
Buffer:	Liquid in 0.42 % Potassium phosphate, 0.87 % Sodium chloride, pH 7.3, 30 % glycerol, and 0.01 % sodium azide.
Preservative:	Sodium azide
Precaution of Use:	This product contains Sodium azide: a POISONOUS AND HAZARDOUS SUBSTANCE which should be handled by trained staff only.
Storage:	-20 °C
Storage Comment:	Shipped at 4°C. Upon delivery aliquot and store at -20°C for one year. Avoid freeze/thaw cycles.
Expiry Date:	12 months

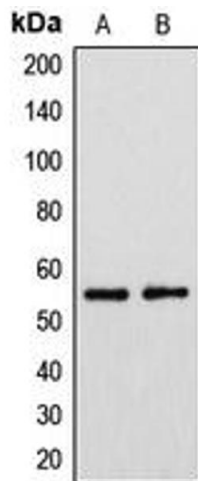
Images



Immunohistochemistry

Image 1. Immunohistochemical analysis of Cytochrome P450 39A1 staining in human liver cancer formalin fixed paraffin embedded tissue section. The section was pre-treated using heat mediated antigen retrieval with sodium citrate buffer (pH 6.0). The section was then incubated with the antibody at room temperature and detected using an HRP conjugated compact polymer system. DAB was used as the chromogen. The section was then counterstained

with haematoxylin and mounted with DPX.



Western Blotting

Image 2. Western blot analysis of Cytochrome P450 39A1 expression in HeLa (A), HuvEc (B) whole cell lysates.