

Datasheet for ABIN7298196
anti-GPR173 antibody (Center)



[Go to Product page](#)

1 Image

Overview

Quantity:	100 µL
Target:	GPR173
Binding Specificity:	Center
Reactivity:	Human, Mouse, Rat, Cow, Monkey
Host:	Rabbit
Clonality:	Polyclonal
Conjugate:	This GPR173 antibody is un-conjugated
Application:	Western Blotting (WB)

Product Details

Immunogen:	KLH-conjugated synthetic peptide encompassing a sequence within the center region of human GPR173.
Specificity:	Recognizes endogenous levels of GPR173 protein.
Characteristics:	Rabbit polyclonal antibody to GPR173
Purification:	The antibody was purified by immunogen affinity chromatography.

Target Details

Target:	GPR173
Alternative Name:	GPR173 (GPR173 Products)
Background:	SREB3, Probable G-protein coupled receptor 173, Super conserved receptor expressed in brain

Target Details

	3
Gene ID:	54328, 70771, 64021
UniProt:	Q9NS66 , Q6PI62 , Q9JJH2

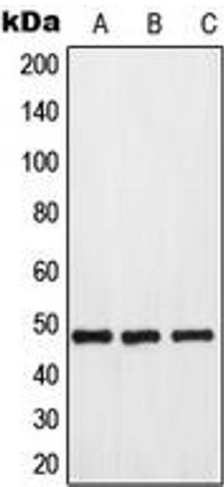
Application Details

Application Notes:	WB (1:500 - 1:1000)
Restrictions:	For Research Use only

Handling

Format:	Liquid
Buffer:	Liquid in 0.42 % Potassium phosphate, 0.87 % Sodium chloride, pH 7.3, 30 % glycerol, and 0.01 % sodium azide.
Preservative:	Sodium azide
Precaution of Use:	This product contains Sodium azide: a POISONOUS AND HAZARDOUS SUBSTANCE which should be handled by trained staff only.
Storage:	-20 °C
Storage Comment:	Shipped at 4°C. Upon delivery aliquot and store at -20°C for one year. Avoid freeze/thaw cycles.
Expiry Date:	12 months

Images



Western Blotting

Image 1. Western blot analysis of GPR173 expression in HeLa (A), mouse kidney (B), rat kidney (C) whole cell lysates.