

Datasheet for ABIN7298218
anti-SLC6A15 antibody (N-Term)



[Go to Product page](#)

1 Image

Overview

Quantity:	100 µL
Target:	SLC6A15
Binding Specificity:	N-Term
Reactivity:	Human, Mouse, Rat, Monkey
Host:	Rabbit
Clonality:	Polyclonal
Conjugate:	This SLC6A15 antibody is un-conjugated
Application:	Western Blotting (WB)

Product Details

Immunogen:	KLH-conjugated synthetic peptide encompassing a sequence within the N-term region of human SBAT1.
Specificity:	Recognizes endogenous levels of SBAT1 protein.
Characteristics:	Rabbit polyclonal antibody to SBAT1
Purification:	The antibody was purified by immunogen affinity chromatography.

Target Details

Target:	SLC6A15
Alternative Name:	SBAT1 (SLC6A15 Products)
Background:	B0AT2, NTT73, SBAT1, Sodium-dependent neutral amino acid transporter B(0)AT2, Sodium-

Target Details

	and chloride-dependent neurotransmitter transporter NTT73, Sodium-coupled branched-chain amino-acid transporter 1, Solute carrier family 6 member 15, Transporter v7-3
Gene ID:	55117, 103098, 282712
UniProt:	Q9H2J7 , Q8BG16 , Q08469

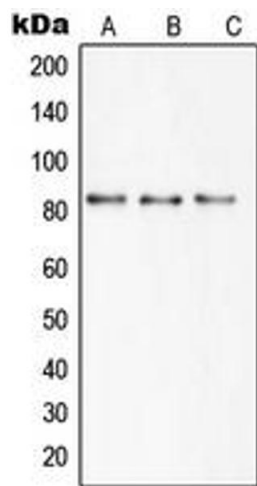
Application Details

Application Notes:	WB (1:500 - 1:1000)
Restrictions:	For Research Use only

Handling

Format:	Liquid
Buffer:	Liquid in 0.42 % Potassium phosphate, 0.87 % Sodium chloride, pH 7.3, 30 % glycerol, and 0.01 % sodium azide.
Preservative:	Sodium azide
Precaution of Use:	This product contains Sodium azide: a POISONOUS AND HAZARDOUS SUBSTANCE which should be handled by trained staff only.
Storage:	-20 °C
Storage Comment:	Shipped at 4°C. Upon delivery aliquot and store at -20°C for one year. Avoid freeze/thaw cycles.
Expiry Date:	12 months

Images



Western Blotting

Image 1. Western blot analysis of SBAT1 expression in HEK293T (A), mouse brain (B), rat brain (C) whole cell lysates.