

Datasheet for ABIN7298224  
**anti-RCBTB1 antibody (Center)**[Go to Product page](#)

## 2 Images

## Overview

Quantity:	100 µL
Target:	RCBTB1
Binding Specificity:	Center
Reactivity:	Human, Mouse, Dog, Monkey, Pig
Host:	Rabbit
Clonality:	Polyclonal
Conjugate:	This RCBTB1 antibody is un-conjugated
Application:	Western Blotting (WB), Immunohistochemistry (IHC)

## Product Details

Immunogen:	KLH-conjugated synthetic peptide encompassing a sequence within the center region of human RCBTB1.
Specificity:	Recognizes endogenous levels of RCBTB1 protein.
Characteristics:	Rabbit polyclonal antibody to RCBTB1
Purification:	The antibody was purified by immunogen affinity chromatography.

## Target Details

Target:	RCBTB1
Alternative Name:	RCBTB1 ( <a href="#">RCBTB1 Products</a> )
Background:	CLLD7, E4.5, RCC1 and BTB domain-containing protein 1, Chronic lymphocytic leukemia

Target Details

	deletion region gene 7 protein, CLL deletion region gene 7 protein, Regulator of chromosome condensation and BTB domain-containing protein 1
Gene ID:	55213, 71330
UniProt:	<a href="#">Q8NDN9</a> , <a href="#">Q6NXM2</a>

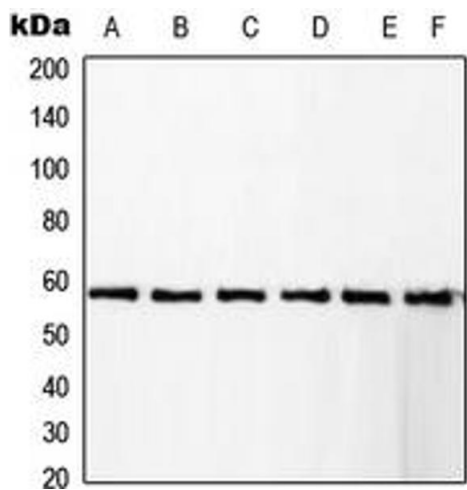
Application Details

Application Notes:	WB (1:500 - 1:1000), IH (1:100 - 1:200)
Restrictions:	For Research Use only

Handling

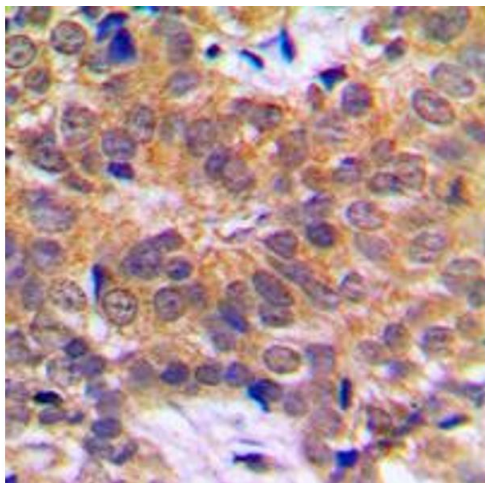
Format:	Liquid
Buffer:	Liquid in 0.42 % Potassium phosphate, 0.87 % Sodium chloride, pH 7.3, 30 % glycerol, and 0.01 % sodium azide.
Preservative:	Sodium azide
Precaution of Use:	This product contains Sodium azide: a POISONOUS AND HAZARDOUS SUBSTANCE which should be handled by trained staff only.
Storage:	-20 °C
Storage Comment:	Shipped at 4°C. Upon delivery aliquot and store at -20°C for one year. Avoid freeze/thaw cycles.
Expiry Date:	12 months

Images



**Western Blotting**

**Image 1.** Western blot analysis of RCBTB1 expression in KNRK (A), Jurkat (B), A431 (C), HeLa (D), Raw264.7 (E), NIH3T3 (F) whole cell lysates.



#### Immunohistochemistry

**Image 2.** Immunohistochemical analysis of RCBTB1 staining in human breast cancer formalin fixed paraffin embedded tissue section. The section was pre-treated using heat mediated antigen retrieval with sodium citrate buffer (pH 6.0). The section was then incubated with the antibody at room temperature and detected using an HRP conjugated compact polymer system. DAB was used as the chromogen. The section was then counterstained with haematoxylin and mounted with DPX.