

Datasheet for ABIN7298290
anti-COL20A1 antibody (C-Term)

3 Images

[Go to Product page](#)

Overview

Quantity:	100 µL
Target:	COL20A1
Binding Specificity:	C-Term
Reactivity:	Human, Chicken
Host:	Rabbit
Clonality:	Polyclonal
Conjugate:	This COL20A1 antibody is un-conjugated
Application:	Western Blotting (WB), Immunohistochemistry (IHC), Immunofluorescence (IF), Immunochromatography (IC)

Product Details

Immunogen:	KLH-conjugated synthetic peptide encompassing a sequence within the C-term region of human Collagen 20 alpha 1.
Specificity:	Recognizes endogenous levels of Collagen 20 alpha 1 protein.
Characteristics:	Rabbit polyclonal antibody to Collagen 20 alpha 1
Purification:	The antibody was purified by immunogen affinity chromatography.

Target Details

Target:	COL20A1
Alternative Name:	Collagen 20 alpha 1 (COL20A1 Products)

Target Details

Background:	KIAA1510, Collagen alpha-1(XX) chain
Gene ID:	57642
UniProt:	Q9P218

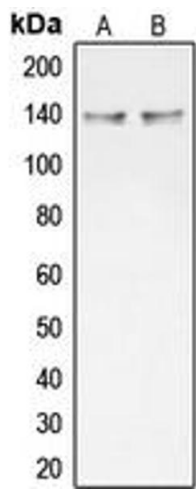
Application Details

Application Notes:	WB (1:500 - 1:1000), IH (1:100 - 1:200), IF/IC (1:100 - 1:500)
Restrictions:	For Research Use only

Handling

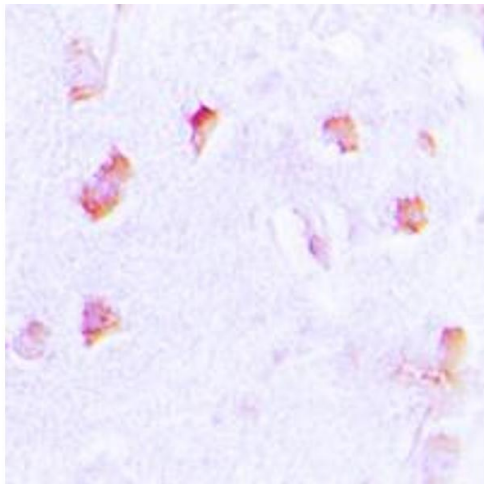
Format:	Liquid
Buffer:	Liquid in 0.42 % Potassium phosphate, 0.87 % Sodium chloride, pH 7.3, 30 % glycerol, and 0.01 % sodium azide.
Preservative:	Sodium azide
Precaution of Use:	This product contains Sodium azide: a POISONOUS AND HAZARDOUS SUBSTANCE which should be handled by trained staff only.
Storage:	-20 °C
Storage Comment:	Shipped at 4°C. Upon delivery aliquot and store at -20°C for one year. Avoid freeze/thaw cycles.
Expiry Date:	12 months

Images



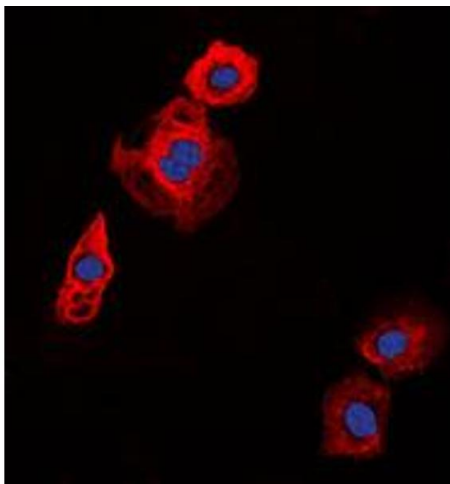
Western Blotting

Image 1. Western blot analysis of Collagen 20 alpha 1 expression in HT29 (A), NCIH292 (B) whole cell lysates.



Immunohistochemistry

Image 2. Immunohistochemical analysis of Collagen 20 alpha 1 staining in human brain formalin fixed paraffin embedded tissue section. The section was pre-treated using heat mediated antigen retrieval with sodium citrate buffer (pH 6.0). The section was then incubated with the antibody at room temperature and detected using an HRP conjugated compact polymer system. DAB was used as the chromogen. The section was then counterstained with haematoxylin and mounted with DPX.



Immunofluorescence

Image 3. Immunofluorescent analysis of Collagen 20 alpha 1 staining in HT29 cells. Formalin-fixed cells were permeabilized with 0.1% Triton X-100 in TBS for 5-10 minutes and blocked with 3% BSA-PBS for 30 minutes at room temperature. Cells were probed with the primary antibody in 3% BSA-PBS and incubated overnight at 4 °C in a humidified chamber. Cells were washed with PBST and incubated with a DyLight 594-conjugated secondary antibody (red) in PBS at room temperature in the dark. DAPI was used to stain the cell nuclei (blue).