

Datasheet for ABIN7298300  
**anti-ARHGAP22 antibody (C-Term)**[Go to Product page](#)

## 2 Images

## Overview

Quantity:	100 µL
Target:	ARHGAP22
Binding Specificity:	C-Term
Reactivity:	Human, Mouse, Rat
Host:	Rabbit
Clonality:	Polyclonal
Conjugate:	This ARHGAP22 antibody is un-conjugated
Application:	Western Blotting (WB), Immunohistochemistry (IHC)

## Product Details

Immunogen:	KLH-conjugated synthetic peptide encompassing a sequence within the C-term region of human ARHGAP22.
Specificity:	Recognizes endogenous levels of ARHGAP22 protein.
Characteristics:	Rabbit polyclonal antibody to ARHGAP22
Purification:	The antibody was purified by immunogen affinity chromatography.

## Target Details

Target:	ARHGAP22
Alternative Name:	ARHGAP22 ( <a href="#">ARHGAP22 Products</a> )
Background:	RHOGAP2, Rho GTPase-activating protein 22, Rho-type GTPase-activating protein 22

## Target Details

Gene ID:	58504, 239027
UniProt:	<a href="#">Q7Z5H3</a> , <a href="#">Q8BL80</a>

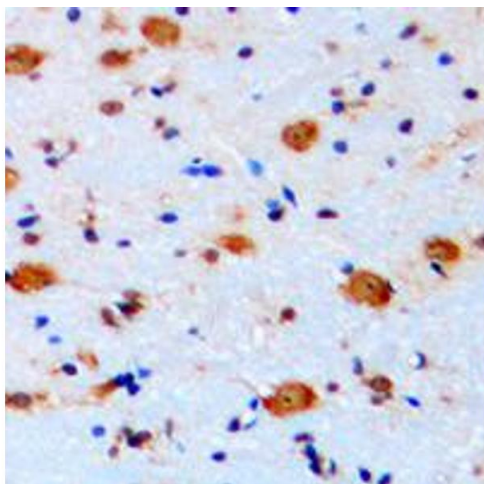
## Application Details

Application Notes:	WB (1:500 - 1:1000), IH (1:100 - 1:200)
Restrictions:	For Research Use only

## Handling

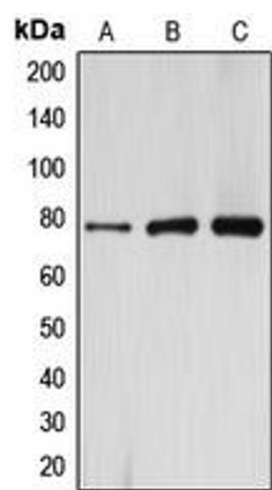
Format:	Liquid
Buffer:	Liquid in 0.42 % Potassium phosphate, 0.87 % Sodium chloride, pH 7.3, 30 % glycerol, and 0.01 % sodium azide.
Preservative:	Sodium azide
Precaution of Use:	This product contains Sodium azide: a POISONOUS AND HAZARDOUS SUBSTANCE which should be handled by trained staff only.
Storage:	-20 °C
Storage Comment:	Shipped at 4°C. Upon delivery aliquot and store at -20°C for one year. Avoid freeze/thaw cycles.
Expiry Date:	12 months

## Images



### Immunohistochemistry

**Image 1.** Immunohistochemical analysis of ARHGAP22 staining in human brain formalin fixed paraffin embedded tissue section. The section was pre-treated using heat mediated antigen retrieval with sodium citrate buffer (pH 6.0). The section was then incubated with the antibody at room temperature and detected using an HRP conjugated compact polymer system. DAB was used as the chromogen. The section was then counterstained with haematoxylin and mounted with DPX.



### Western Blotting

**Image 2.** Western blot analysis of ARHGAP22 expression in HeLa (A), mouse kidney (B), rat kidney (C) whole cell lysates.