



[Go to Product page](#)

Datasheet for ABIN7298318  
**anti-IFIH1 antibody (C-Term)**

3 Images

Overview

Quantity:	100 µL
Target:	IFIH1
Binding Specificity:	C-Term
Reactivity:	Human, Rat
Host:	Rabbit
Clonality:	Polyclonal
Conjugate:	This IFIH1 antibody is un-conjugated
Application:	Western Blotting (WB), Immunohistochemistry (IHC), Immunofluorescence (IF), Immunochromatography (IC)

Product Details

Immunogen:	KLH-conjugated synthetic peptide encompassing a sequence within the C-term region of human MDA5.
Specificity:	Recognizes endogenous levels of MDA5 protein.
Characteristics:	Rabbit polyclonal antibody to MDA5
Purification:	The antibody was purified by immunogen affinity chromatography.

Target Details

Target:	IFIH1
Alternative Name:	MDA5 ( <a href="#">IFIH1 Products</a> )

## Target Details

---

Background: MDA5, RH116, Interferon-induced helicase C domain-containing protein 1, Clinically amyopathic dermatomyositis autoantigen 140 kDa, CADM-140 autoantigen, Helicase with 2 CARD domains, Helicard, Interferon-induced with helicase C domain protein 1, Melanoma differentiation-associated protein 5, MDA-5, Murabutide down-regulated protein, RIG-I-like receptor 2, RLR-2, RNA helicase-DEAD box protein 116

Gene ID: 64135

UniProt: [Q9BYX4](#)

Pathways: [Activation of Innate immune Response](#)

## Application Details

---

Application Notes: WB (1:500 - 1:1000), IH (1:100 - 1:200), IF/IC (1:100 - 1:500)

Restrictions: For Research Use only

## Handling

---

Format: Liquid

Buffer: Liquid in 0.42 % Potassium phosphate, 0.87 % Sodium chloride, pH 7.3, 30 % glycerol, and 0.01 % sodium azide.

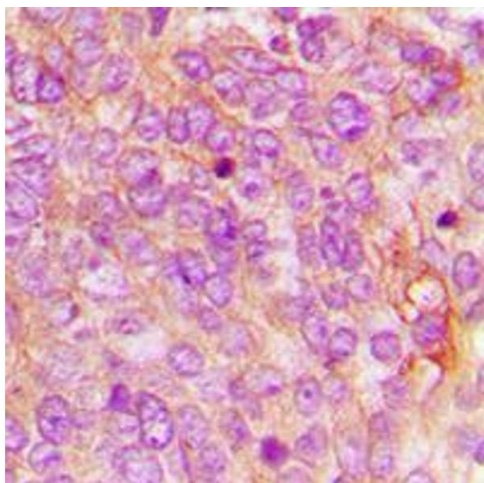
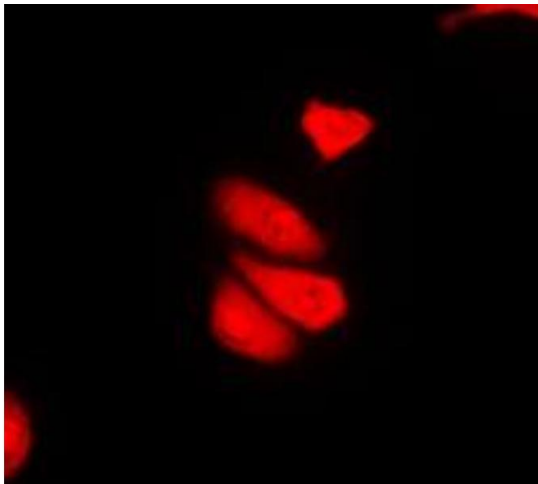
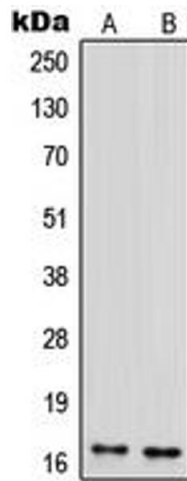
Preservative: Sodium azide

Precaution of Use: This product contains Sodium azide: a POISONOUS AND HAZARDOUS SUBSTANCE which should be handled by trained staff only.

Storage: -20 °C

Storage Comment: Shipped at 4°C. Upon delivery aliquot and store at -20°C for one year. Avoid freeze/thaw cycles.

Expiry Date: 12 months



### Western Blotting

**Image 1.** Western blot analysis of MDA5 expression in HepG2 (A), THP1 (B) whole cell lysates.

### Immunofluorescence

**Image 2.** Immunofluorescent analysis of MDA5 staining in THP1 cells. Formalin-fixed cells were permeabilized with 0.1% Triton X-100 in TBS for 5-10 minutes and blocked with 3% BSA-PBS for 30 minutes at room temperature. Cells were probed with the primary antibody in 3% BSA-PBS and incubated overnight at 4 °C in a humidified chamber. Cells were washed with PBST and incubated with a DyLight 594-conjugated secondary antibody (red) in PBS at room temperature in the dark. DAPI was used to stain the cell nuclei (blue).

### Immunohistochemistry

**Image 3.** Immunohistochemical analysis of MDA5 staining in human breast cancer formalin fixed paraffin embedded tissue section. The section was pre-treated using heat mediated antigen retrieval with sodium citrate buffer (pH 6.0). The section was then incubated with the antibody at room temperature and detected using an HRP conjugated compact polymer system. DAB was used as the chromogen. The section was then counterstained with haematoxylin and mounted with DPX.