



Datasheet for ABIN7298320
anti-Sema4a antibody (Center)



[Go to Product page](#)

3 Images

Overview

Quantity:	100 µL
Target:	Sema4a
Binding Specificity:	Center
Reactivity:	Human, Monkey
Host:	Rabbit
Clonality:	Polyclonal
Conjugate:	This Sema4a antibody is un-conjugated
Application:	Western Blotting (WB), Immunofluorescence (IF), Immunoprecipitation (IP), Immunochromatography (IC)

Product Details

Immunogen:	KLH-conjugated synthetic peptide encompassing a sequence within the center region of human Semaphorin 4A.
Specificity:	Recognizes endogenous levels of Semaphorin 4A protein.
Characteristics:	Rabbit polyclonal antibody to Semaphorin 4A
Purification:	The antibody was purified by immunogen affinity chromatography.

Target Details

Target:	Sema4a
Alternative Name:	Semaphorin 4A (Sema4a Products)

Target Details

Background: SEMAB, SEMB, Semaphorin-4A, Semaphorin-B, Sema B

Gene ID: 64218

UniProt: [Q9H3S1](#)

Application Details

Application Notes: WB (1:500 - 1:1000), IF/IC (1:100 - 1:500), IP (1:10 - 1:100)

Restrictions: For Research Use only

Handling

Format: Liquid

Buffer: Liquid in 0.42 % Potassium phosphate, 0.87 % Sodium chloride, pH 7.3, 30 % glycerol, and 0.01 % sodium azide.

Preservative: Sodium azide

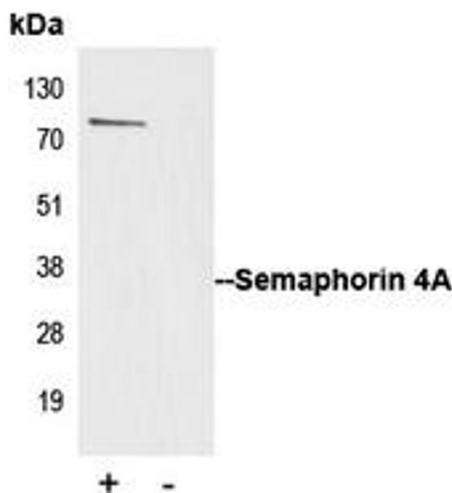
Precaution of Use: This product contains Sodium azide: a POISONOUS AND HAZARDOUS SUBSTANCE which should be handled by trained staff only.

Storage: -20 °C

Storage Comment: Shipped at 4°C. Upon delivery aliquot and store at -20°C for one year. Avoid freeze/thaw cycles.

Expiry Date: 12 months

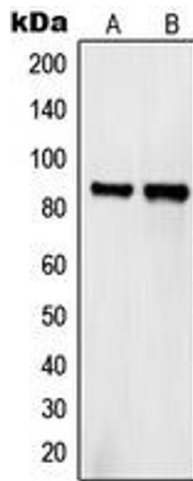
Images



Immunoprecipitation

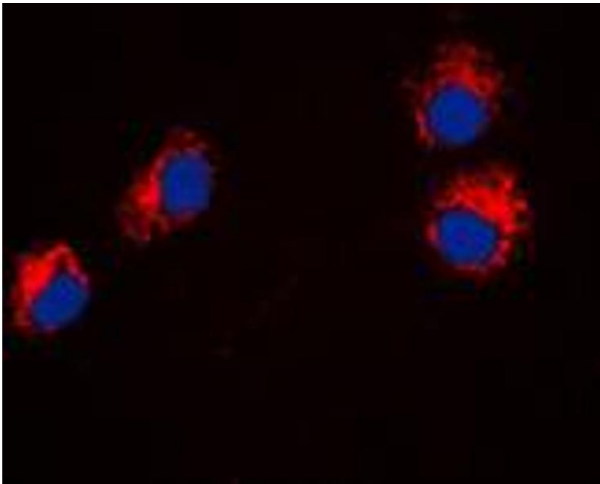
Image 1. Immunoprecipitation of Semaphorin 4A from 0.5mg Jurkat whole cell extract lysate, using 5ug of Anti-Semaphorin 4A Antibody and 50ul of protein G magnetic beads (+). No antibody was added to the control (-). The antibody was incubated under agitation with Protein G beads for 10min, Jurkat whole cell extract lysate diluted in RIPA buffer was added to each sample and incubated for a further 10min under agitation. Proteins were eluted by addition of 40ul SDS loading buffer and incubated for 10min

at 70°C; 10ul of each sample was separated on a SDS PAGE gel, transferred to a nitrocellulose membrane, blocked with 5% BSA and probed with Anti-Semaphorin 4A Antibody.



Western Blotting

Image 2. Western blot analysis of Semaphorin 4A expression in HeLa (A), COS7 (B) whole cell lysates.



Immunofluorescence

Image 3. Immunofluorescent analysis of Semaphorin 4A staining in HeLa cells. Formalin-fixed cells were permeabilized with 0.1% Triton X-100 in TBS for 5-10 minutes and blocked with 3% BSA-PBS for 30 minutes at room temperature. Cells were probed with the primary antibody in 3% BSA-PBS and incubated overnight at 4 °C in a humidified chamber. Cells were washed with PBST and incubated with a DyLight 594-conjugated secondary antibody (red) in PBS at room temperature in the dark. DAPI was used to stain the cell nuclei (blue).