

Datasheet for ABIN7298374
anti-EPS8-Like 3 antibody (Center)

3 Images

[Go to Product page](#)

Overview

Quantity:	100 µL
Target:	EPS8-Like 3 (EPS8L3)
Binding Specificity:	Center
Reactivity:	Human
Host:	Rabbit
Clonality:	Polyclonal
Conjugate:	This EPS8-Like 3 antibody is un-conjugated
Application:	Immunohistochemistry (IHC), Western Blotting (WB), Immunofluorescence (IF), Immunochromatography (IC)

Product Details

Immunogen:	KLH-conjugated synthetic peptide encompassing a sequence within the center region of human EPS8L3.
Specificity:	Recognizes endogenous levels of EPS8L3 protein.
Characteristics:	Rabbit polyclonal antibody to EPS8L3
Purification:	The antibody was purified by immunogen affinity chromatography.

Target Details

Target:	EPS8-Like 3 (EPS8L3)
Alternative Name:	EPS8L3 (EPS8L3 Products)

Target Details

Background:	EPS8R3, Epidermal growth factor receptor kinase substrate 8-like protein 3, EPS8-like protein 3, Epidermal growth factor receptor pathway substrate 8-related protein 3, EPS8-related protein 3
Gene ID:	79574
UniProt:	Q8TE67

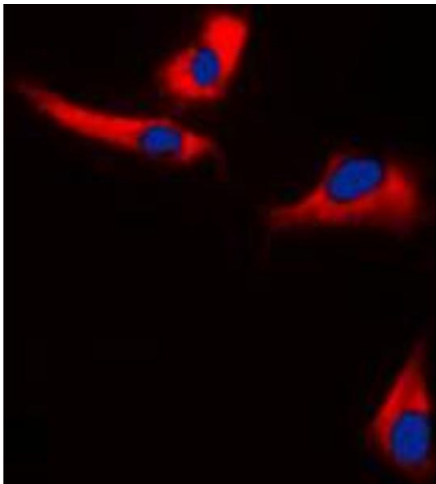
Application Details

Application Notes:	WB (1:500 - 1:1000), IH (1:100 - 1:200), IF/IC (1:100 - 1:500)
Restrictions:	For Research Use only

Handling

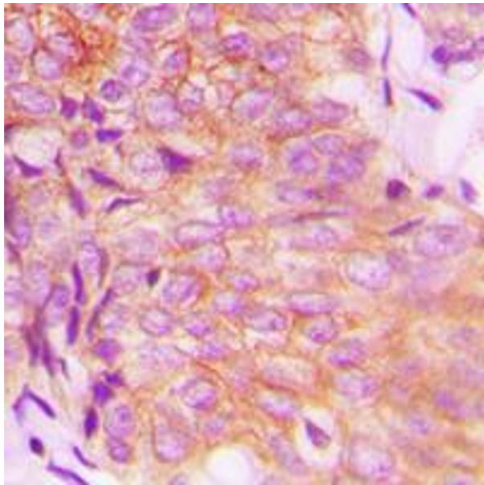
Format:	Liquid
Buffer:	Liquid in 0.42 % Potassium phosphate, 0.87 % Sodium chloride, pH 7.3, 30 % glycerol, and 0.01 % sodium azide.
Preservative:	Sodium azide
Precaution of Use:	This product contains Sodium azide: a POISONOUS AND HAZARDOUS SUBSTANCE which should be handled by trained staff only.
Storage:	-20 °C
Storage Comment:	Shipped at 4°C. Upon delivery aliquot and store at -20°C for one year. Avoid freeze/thaw cycles.
Expiry Date:	12 months

Images



Immunofluorescence

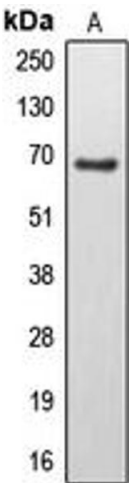
Image 1. Immunofluorescent analysis of EPS8L3 staining in U251MG cells. Formalin-fixed cells were permeabilized with 0.1% Triton X-100 in TBS for 5-10 minutes and blocked with 3% BSA-PBS for 30 minutes at room temperature. Cells were probed with the primary antibody in 3% BSA-PBS and incubated overnight at 4 °C in a humidified chamber. Cells were washed with PBST and incubated with a DyLight 594-conjugated secondary antibody (red) in PBS at room



temperature in the dark. DAPI was used to stain the cell nuclei (blue).

Immunohistochemistry

Image 2. Immunohistochemical analysis of EPS8L3 staining in human breast cancer formalin fixed paraffin embedded tissue section. The section was pre-treated using heat mediated antigen retrieval with sodium citrate buffer (pH 6.0). The section was then incubated with the antibody at room temperature and detected using an HRP conjugated compact polymer system. DAB was used as the chromogen. The section was then counterstained with haematoxylin and mounted with DPX.



Western Blotting

Image 3. Western blot analysis of EPS8L3 expression in U251MG (A) whole cell lysates.