

Datasheet for ABIN7298378
anti-LASS4 antibody (Center)[Go to Product page](#)

1 Image

Overview

Quantity:	100 µL
Target:	LASS4 (CERS4)
Binding Specificity:	Center
Reactivity:	Human, Monkey
Host:	Rabbit
Clonality:	Polyclonal
Conjugate:	This LASS4 antibody is un-conjugated
Application:	Western Blotting (WB), Immunoprecipitation (IP)

Product Details

Immunogen:	KLH-conjugated synthetic peptide encompassing a sequence within the center region of human LASS4.
Specificity:	Recognizes endogenous levels of LASS4 protein.
Characteristics:	Rabbit polyclonal antibody to LASS4
Purification:	The antibody was purified by immunogen affinity chromatography.

Target Details

Target:	LASS4 (CERS4)
Alternative Name:	LASS4 (CERS4 Products)
Background:	LASS4, Ceramide synthase 4, CerS4, LAG1 longevity assurance homolog 4

Target Details

Gene ID: 79603

UniProt: [Q9HA82](#)

Application Details

Application Notes: WB (1:500 - 1:1000), IP (1:10 - 1:100)

Restrictions: For Research Use only

Handling

Format: Liquid

Buffer: Liquid in 0.42 % Potassium phosphate, 0.87 % Sodium chloride, pH 7.3, 30 % glycerol, and 0.01 % sodium azide.

Preservative: Sodium azide

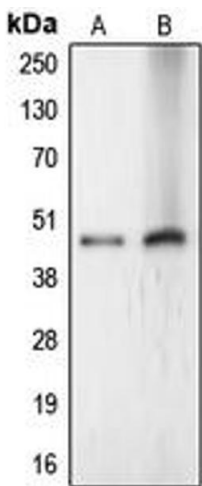
Precaution of Use: This product contains Sodium azide: a POISONOUS AND HAZARDOUS SUBSTANCE which should be handled by trained staff only.

Storage: -20 °C

Storage Comment: Shipped at 4°C. Upon delivery aliquot and store at -20°C for one year. Avoid freeze/thaw cycles.

Expiry Date: 12 months

Images



Western Blotting

Image 1. Western blot analysis of LASS4 expression in HeLa (A), Jurkat (B) whole cell lysates.