

Datasheet for ABIN7298390
anti-RABEP2 antibody (Center)[Go to Product page](#)

2 Images

Overview

Quantity:	100 µL
Target:	RABEP2
Binding Specificity:	Center
Reactivity:	Human, Monkey
Host:	Rabbit
Clonality:	Polyclonal
Conjugate:	This RABEP2 antibody is un-conjugated
Application:	Western Blotting (WB), Immunohistochemistry (IHC), Immunoprecipitation (IP)

Product Details

Immunogen:	KLH-conjugated synthetic peptide encompassing a sequence within the center region of human Rabaptin 5 beta.
Specificity:	Recognizes endogenous levels of Rabaptin 5 beta protein.
Characteristics:	Rabbit polyclonal antibody to Rabaptin 5 beta
Purification:	The antibody was purified by immunogen affinity chromatography.

Target Details

Target:	RABEP2
Alternative Name:	Rabaptin 5 beta (RABEP2 Products)
Background:	RABPT5B, Rab GTPase-binding effector protein 2, Rabaptin-5beta

Target Details

Gene ID: 79874

UniProt: [Q9H5N1](#)

Application Details

Application Notes: WB (1:500 - 1:1000), IH (1:100 - 1:200), IP (1:10 - 1:100)

Restrictions: For Research Use only

Handling

Format: Liquid

Buffer: Liquid in 0.42 % Potassium phosphate, 0.87 % Sodium chloride, pH 7.3, 30 % glycerol, and 0.01 % sodium azide.

Preservative: Sodium azide

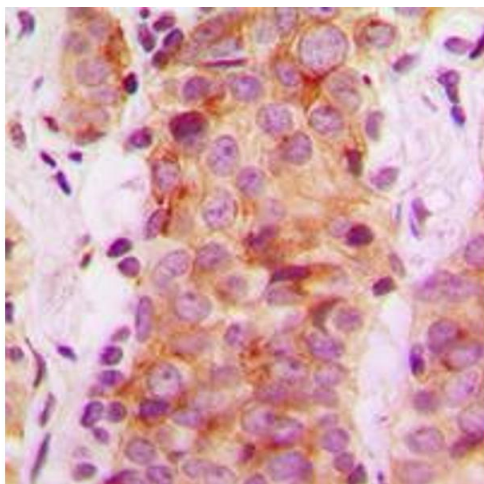
Precaution of Use: This product contains Sodium azide: a POISONOUS AND HAZARDOUS SUBSTANCE which should be handled by trained staff only.

Storage: -20 °C

Storage Comment: Shipped at 4°C. Upon delivery aliquot and store at -20°C for one year. Avoid freeze/thaw cycles.

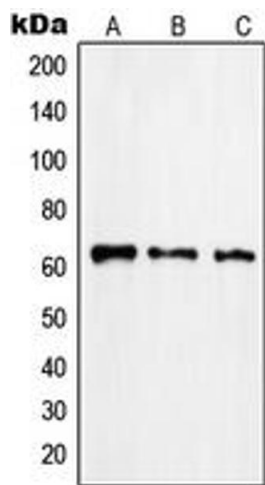
Expiry Date: 12 months

Images



Immunohistochemistry

Image 1. Immunohistochemical analysis of Rabaptin 5 beta staining in human breast cancer formalin fixed paraffin embedded tissue section. The section was pre-treated using heat mediated antigen retrieval with sodium citrate buffer (pH 6.0). The section was then incubated with the antibody at room temperature and detected using an HRP conjugated compact polymer system. DAB was used as the chromogen. The section was then counterstained with haematoxylin and mounted with DPX.



Western Blotting

Image 2. Western blot analysis of Rabaptin 5 beta expression in Jurkat (A), HuvEc (B), human pancreas (C) whole cell lysates.