

Datasheet for ABIN7298410
anti-COL18A1 antibody (C-Term)

2 Images

[Go to Product page](#)

Overview

Quantity:	100 µL
Target:	COL18A1
Binding Specificity:	C-Term
Reactivity:	Human, Rat, Dog
Host:	Rabbit
Clonality:	Polyclonal
Conjugate:	This COL18A1 antibody is un-conjugated
Application:	Western Blotting (WB), Immunohistochemistry (IHC)

Product Details

Immunogen:	KLH-conjugated synthetic peptide encompassing a sequence within the C-term region of human Collagen 18 alpha 1.
Specificity:	Recognizes endogenous levels of Collagen 18 alpha 1 protein.
Characteristics:	Rabbit polyclonal antibody to Collagen 18 alpha 1
Purification:	The antibody was purified by immunogen affinity chromatography.

Target Details

Target:	COL18A1
Alternative Name:	Collagen 18 alpha 1 (COL18A1 Products)
Background:	Collagen alpha-1(XVIII) chain

Target Details

Gene ID:	80781
UniProt:	P39060

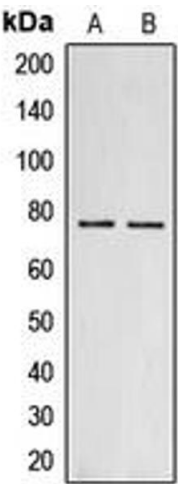
Application Details

Application Notes:	WB (1:500 - 1:1000), IH (1:100 - 1:200)
Restrictions:	For Research Use only

Handling

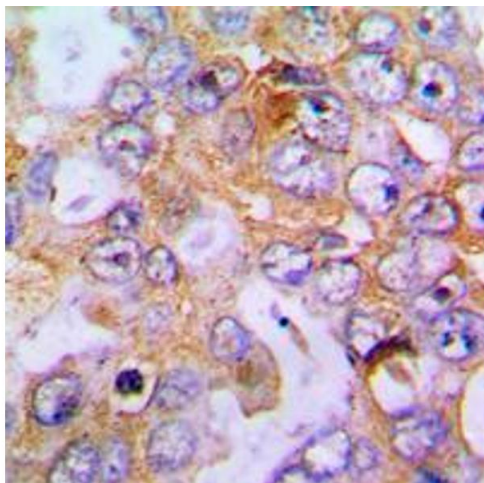
Format:	Liquid
Buffer:	Liquid in 0.42 % Potassium phosphate, 0.87 % Sodium chloride, pH 7.3, 30 % glycerol, and 0.01 % sodium azide.
Preservative:	Sodium azide
Precaution of Use:	This product contains Sodium azide: a POISONOUS AND HAZARDOUS SUBSTANCE which should be handled by trained staff only.
Storage:	-20 °C
Storage Comment:	Shipped at 4°C. Upon delivery aliquot and store at -20°C for one year. Avoid freeze/thaw cycles.
Expiry Date:	12 months

Images



Western Blotting

Image 1. Western blot analysis of Collagen 18 alpha 1 expression in MCF7 (A), PC12 (B) whole cell lysates.



Immunohistochemistry

Image 2. Immunohistochemical analysis of Collagen 18 alpha 1 staining in human lung cancer formalin fixed paraffin embedded tissue section. The section was pre-treated using heat mediated antigen retrieval with sodium citrate buffer (pH 6.0). The section was then incubated with the antibody at room temperature and detected using an HRP conjugated compact polymer system. DAB was used as the chromogen. The section was then counterstained with haematoxylin and mounted with DPX.