

Datasheet for ABIN7298420
anti-SLC25A31 antibody (Center)[Go to Product page](#)

2 Images

Overview

Quantity:	100 µL
Target:	SLC25A31
Binding Specificity:	Center
Reactivity:	Human, Monkey
Host:	Rabbit
Clonality:	Polyclonal
Conjugate:	This SLC25A31 antibody is un-conjugated
Application:	Western Blotting (WB), Immunofluorescence (IF), Immunoprecipitation (IP), Immunochromatography (IC)

Product Details

Immunogen:	KLH-conjugated synthetic peptide encompassing a sequence within the center region of human ANT4.
Specificity:	Recognizes endogenous levels of ANT4 protein.
Characteristics:	Rabbit polyclonal antibody to ANT4
Purification:	The antibody was purified by immunogen affinity chromatography.

Target Details

Target:	SLC25A31
Alternative Name:	ANT4 (SLC25A31 Products)

Target Details

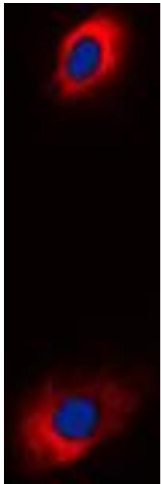
Background:	AAC4, ANT4, SFEC, ADP/ATP translocase 4, ADP,ATP carrier protein 4, Adenine nucleotide translocator 4, ANT 4, Solute carrier family 25 member 31, Sperm flagellar energy carrier protein
Gene ID:	83447
UniProt:	Q9H0C2

Application Details

Application Notes:	WB (1:500 - 1:1000), IF/IC (1:100 - 1:500), IP (1:10 - 1:100)
Restrictions:	For Research Use only

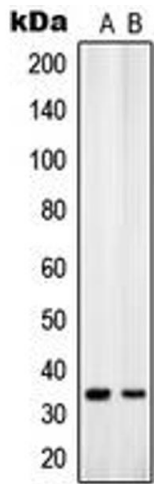
Handling

Format:	Liquid
Buffer:	Liquid in 0.42 % Potassium phosphate, 0.87 % Sodium chloride, pH 7.3, 30 % glycerol, and 0.01 % sodium azide.
Preservative:	Sodium azide
Precaution of Use:	This product contains Sodium azide: a POISONOUS AND HAZARDOUS SUBSTANCE which should be handled by trained staff only.
Storage:	-20 °C
Storage Comment:	Shipped at 4°C. Upon delivery aliquot and store at -20°C for one year. Avoid freeze/thaw cycles.
Expiry Date:	12 months



Immunofluorescence

Image 1. Immunofluorescent analysis of ANT4 staining in K562 cells. Formalin-fixed cells were permeabilized with 0.1% Triton X-100 in TBS for 5-10 minutes and blocked with 3% BSA-PBS for 30 minutes at room temperature. Cells were probed with the primary antibody in 3% BSA-PBS and incubated overnight at 4 °C in a humidified chamber. Cells were washed with PBST and incubated with a DyLight 594-conjugated secondary antibody (red) in PBS at room temperature in the dark. DAPI was used to stain the cell nuclei (blue).



Western Blotting

Image 2. Western blot analysis of ANT4 expression in K562 (A), U251MG (B) whole cell lysates.