

Datasheet for ABIN7298448
anti-ZC3H8 antibody (Center)

2 Images

[Go to Product page](#)

Overview

Quantity:	100 µL
Target:	ZC3H8
Binding Specificity:	Center
Reactivity:	Human, Mouse, Rat, Monkey
Host:	Rabbit
Clonality:	Polyclonal
Conjugate:	This ZC3H8 antibody is un-conjugated
Application:	Western Blotting (WB), Immunohistochemistry (IHC)

Product Details

Immunogen:	KLH-conjugated synthetic peptide encompassing a sequence within the center region of human ZC3H8.
Specificity:	Recognizes endogenous levels of ZC3H8 protein.
Characteristics:	Rabbit polyclonal antibody to ZC3H8
Purification:	The antibody was purified by immunogen affinity chromatography.

Target Details

Target:	ZC3H8
Alternative Name:	ZC3H8 (ZC3H8 Products)
Background:	ZC3HDC8, Zinc finger CCCH domain-containing protein 8

Target Details

Gene ID:	84524, 57432
UniProt:	Q8N5P1 , Q9JJ48

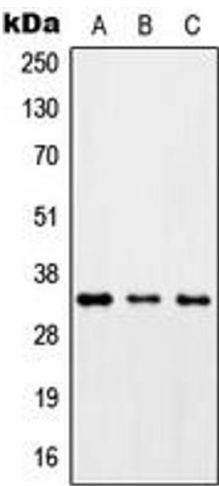
Application Details

Application Notes:	WB (1:500 - 1:1000), IH (1:100 - 1:200)
Restrictions:	For Research Use only

Handling

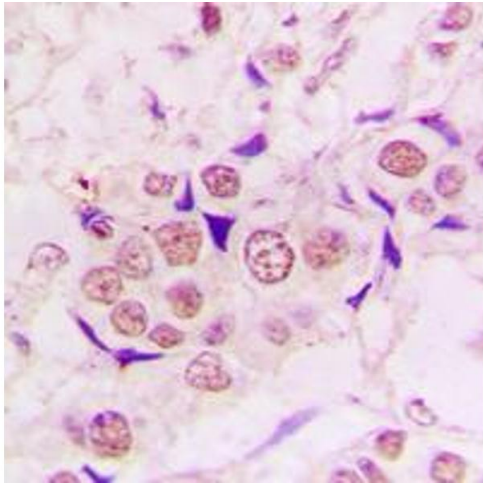
Format:	Liquid
Buffer:	Liquid in 0.42 % Potassium phosphate, 0.87 % Sodium chloride, pH 7.3, 30 % glycerol, and 0.01 % sodium azide.
Preservative:	Sodium azide
Precaution of Use:	This product contains Sodium azide: a POISONOUS AND HAZARDOUS SUBSTANCE which should be handled by trained staff only.
Storage:	-20 °C
Storage Comment:	Shipped at 4°C. Upon delivery aliquot and store at -20°C for one year. Avoid freeze/thaw cycles.
Expiry Date:	12 months

Images



Western Blotting

Image 1. Western blot analysis of ZC3H8 expression in HepG2 (A), Raw264.7 (B), H9C2 (C) whole cell lysates.



Immunohistochemistry

Image 2. Immunohistochemical analysis of ZC3H8 staining in human lung cancer formalin fixed paraffin embedded tissue section. The section was pre-treated using heat mediated antigen retrieval with sodium citrate buffer (pH 6.0). The section was then incubated with the antibody at room temperature and detected using an HRP conjugated compact polymer system. DAB was used as the chromogen. The section was then counterstained with haematoxylin and mounted with DPX.