

Datasheet for ABIN7298454  
**anti-CARD6 antibody (N-Term)**

## 3 Images

[Go to Product page](#)

## Overview

Quantity:	100 µL
Target:	CARD6
Binding Specificity:	N-Term
Reactivity:	Human, Mouse, Rat
Host:	Rabbit
Clonality:	Polyclonal
Conjugate:	This CARD6 antibody is un-conjugated
Application:	Western Blotting (WB), Immunohistochemistry (IHC), Immunofluorescence (IF), Immunochromatography (IC)

## Product Details

Immunogen:	KLH-conjugated synthetic peptide encompassing a sequence within the N-term region of human CARD6.
Specificity:	Recognizes endogenous levels of CARD6 protein.
Characteristics:	Rabbit polyclonal antibody to CARD6
Purification:	The antibody was purified by immunogen affinity chromatography.

## Target Details

Target:	CARD6
Alternative Name:	CARD6 ( <a href="#">CARD6 Products</a> )

## Target Details

Background: Caspase recruitment domain-containing protein 6

Gene ID: 84674

UniProt: [Q9BX69](#)

## Application Details

Application Notes: WB (1:500 - 1:1000), IH (1:100 - 1:200), IF/IC (1:100 - 1:500)

Restrictions: For Research Use only

## Handling

Format: Liquid

Buffer: Liquid in 0.42 % Potassium phosphate, 0.87 % Sodium chloride, pH 7.3, 30 % glycerol, and 0.01 % sodium azide.

Preservative: Sodium azide

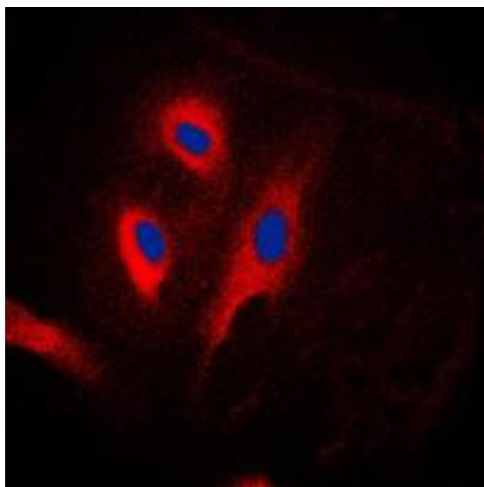
Precaution of Use: This product contains Sodium azide: a POISONOUS AND HAZARDOUS SUBSTANCE which should be handled by trained staff only.

Storage: -20 °C

Storage Comment: Shipped at 4°C. Upon delivery aliquot and store at -20°C for one year. Avoid freeze/thaw cycles.

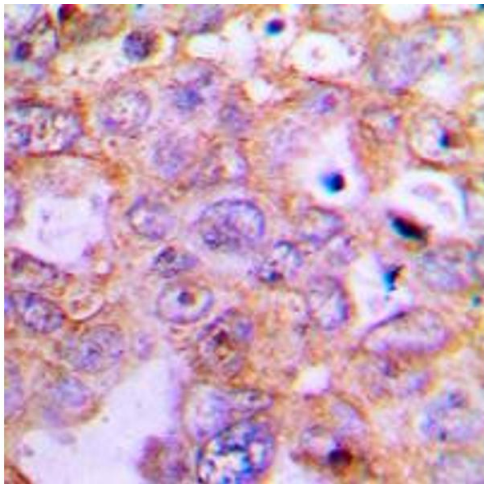
Expiry Date: 12 months

## Images



### Immunofluorescence

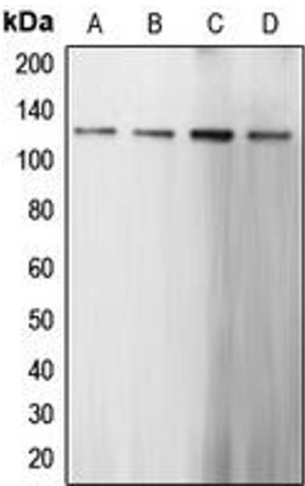
**Image 1.** Immunofluorescent analysis of CARD6 staining in Jurkat cells. Formalin-fixed cells were permeabilized with 0.1% Triton X-100 in TBS for 5-10 minutes and blocked with 3% BSA-PBS for 30 minutes at room temperature. Cells were probed with the primary antibody in 3% BSA-PBS and incubated overnight at 4 °C in a humidified chamber. Cells were washed with PBST and incubated with a DyLight 594-conjugated secondary antibody (red) in PBS at room temperature in the dark. DAPI was used to stain the cell



nuclei (blue).

Immunohistochemistry

**Image 2.** Immunohistochemical analysis of CARD6 staining in human lung cancer formalin fixed paraffin embedded tissue section. The section was pre-treated using heat mediated antigen retrieval with sodium citrate buffer (pH 6.0). The section was then incubated with the antibody at room temperature and detected using an HRP conjugated compact polymer system. DAB was used as the chromogen. The section was then counterstained with haematoxylin and mounted with DPX.



Western Blotting

**Image 3.** Western blot analysis of CARD6 expression in HeLa (A), Jurkat (B), mouse kidney (C), rat brain (D) whole cell lysates.