

Datasheet for ABIN7298490
anti-GNG8 antibody (Center)[Go to Product page](#)

1 Image

Overview

Quantity:	100 µL
Target:	GNG8
Binding Specificity:	Center
Reactivity:	Mouse, Human, Rat, Cow, Dog, Monkey, Pig, Sheep
Host:	Rabbit
Clonality:	Polyclonal
Conjugate:	This GNG8 antibody is un-conjugated
Application:	Western Blotting (WB)

Product Details

Immunogen:	KLH-conjugated synthetic peptide encompassing a sequence within the center region of human GNG8.
Specificity:	Recognizes endogenous levels of GNG8 protein.
Characteristics:	Rabbit polyclonal antibody to GNG8
Purification:	The antibody was purified by immunogen affinity chromatography.

Target Details

Target:	GNG8
Alternative Name:	GNG8 (GNG8 Products)
Background:	GNG9, GNGT9, Guanine nucleotide-binding protein G(I)/G(S)/G(O) subunit gamma-8, Gamma-9

Target Details

Gene ID:	94235, 14709, 245986
UniProt:	Q9UK08 , P63078 , P63077
Pathways:	Myometrial Relaxation and Contraction

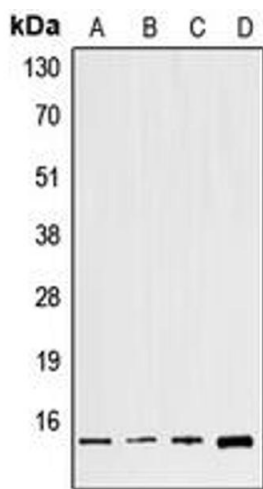
Application Details

Application Notes:	WB (1:500 - 1:1000)
Restrictions:	For Research Use only

Handling

Format:	Liquid
Buffer:	Liquid in 0.42 % Potassium phosphate, 0.87 % Sodium chloride, pH 7.3, 30 % glycerol, and 0.01 % sodium azide.
Preservative:	Sodium azide
Precaution of Use:	This product contains Sodium azide: a POISONOUS AND HAZARDOUS SUBSTANCE which should be handled by trained staff only.
Storage:	-20 °C
Storage Comment:	Shipped at 4°C. Upon delivery aliquot and store at -20°C for one year. Avoid freeze/thaw cycles.
Expiry Date:	12 months

Images



Western Blotting

Image 1. Western blot analysis of GNG8 expression in HeLa (A), NIH3T3 (B), mouse brain (C), H9C2 (D) whole cell lysates.