

Datasheet for ABIN7298544
anti-DOCK11 antibody (Center)[Go to Product page](#)

1 Image

Overview

Quantity:	100 µL
Target:	DOCK11
Binding Specificity:	Center
Reactivity:	Human, Mouse, Rat, Pig
Host:	Rabbit
Clonality:	Polyclonal
Conjugate:	This DOCK11 antibody is un-conjugated
Application:	Western Blotting (WB)

Product Details

Immunogen:	KLH-conjugated synthetic peptide encompassing a sequence within the center region of human DOCK11.
Specificity:	Recognizes endogenous levels of DOCK11 protein.
Characteristics:	Rabbit polyclonal antibody to DOCK11
Purification:	The antibody was purified by immunogen affinity chromatography.

Target Details

Target:	DOCK11
Alternative Name:	DOCK11 (DOCK11 Products)
Background:	ZIZ2, Dedicator of cytokinesis protein 11, Activated Cdc42-associated guanine nucleotide

Target Details

exchange factor, ACG, Zizimin-2

Gene ID: 139818, 75974

UniProt: [Q5JSL3](#), [A2AF47](#)

Application Details

Application Notes: WB (1:500 - 1:1000)

Restrictions: For Research Use only

Handling

Format: Liquid

Buffer: Liquid in 0.42 % Potassium phosphate, 0.87 % Sodium chloride, pH 7.3, 30 % glycerol, and 0.01 % sodium azide.

Preservative: Sodium azide

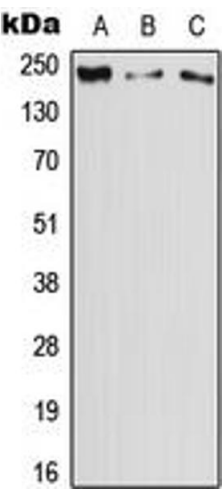
Precaution of Use: This product contains Sodium azide: a POISONOUS AND HAZARDOUS SUBSTANCE which should be handled by trained staff only.

Storage: -20 °C

Storage Comment: Shipped at 4°C. Upon delivery aliquot and store at -20°C for one year. Avoid freeze/thaw cycles.

Expiry Date: 12 months

Images



Western Blotting

Image 1. Western blot analysis of DOCK11 expression in HeLa (A), Raw264.7 (B), PC12 (C) whole cell lysates.