

Datasheet for ABIN7298556
anti-NEURL2 antibody (Center)[Go to Product page](#)

2 Images

Overview

Quantity:	100 µL
Target:	NEURL2
Binding Specificity:	Center
Reactivity:	Human, Monkey
Host:	Rabbit
Clonality:	Polyclonal
Conjugate:	This NEURL2 antibody is un-conjugated
Application:	Western Blotting (WB), Immunohistochemistry (IHC), Immunoprecipitation (IP)

Product Details

Immunogen:	KLH-conjugated synthetic peptide encompassing a sequence within the center region of human NEURL2.
Specificity:	Recognizes endogenous levels of NEURL2 protein.
Characteristics:	Rabbit polyclonal antibody to NEURL2
Purification:	The antibody was purified by immunogen affinity chromatography.

Target Details

Target:	NEURL2
Alternative Name:	NEURL2 (NEURL2 Products)
Background:	C20orf163, Neuralized-like protein 2

Target Details

Gene ID:	140825
UniProt:	Q9BR09

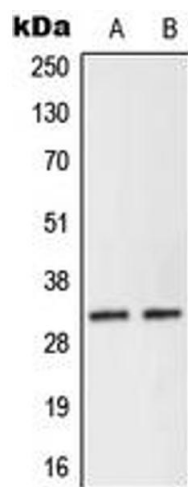
Application Details

Application Notes:	WB (1:500 - 1:1000), IH (1:100 - 1:200), IP (1:10 - 1:100)
Restrictions:	For Research Use only

Handling

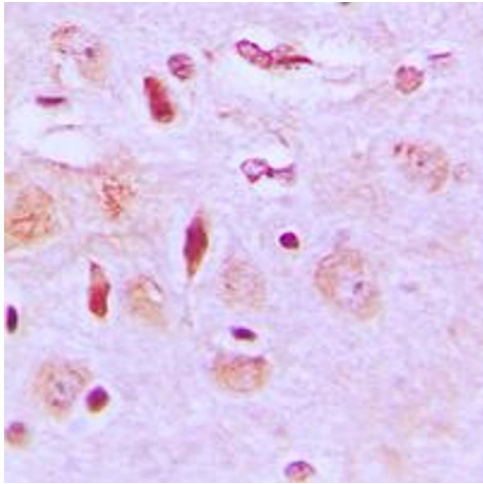
Format:	Liquid
Buffer:	Liquid in 0.42 % Potassium phosphate, 0.87 % Sodium chloride, pH 7.3, 30 % glycerol, and 0.01 % sodium azide.
Preservative:	Sodium azide
Precaution of Use:	This product contains Sodium azide: a POISONOUS AND HAZARDOUS SUBSTANCE which should be handled by trained staff only.
Storage:	-20 °C
Storage Comment:	Shipped at 4°C. Upon delivery aliquot and store at -20°C for one year. Avoid freeze/thaw cycles.
Expiry Date:	12 months

Images



Western Blotting

Image 1. Western blot analysis of NEURL2 expression in Human Placenta (A), KNRK (B) whole cell lysates.



Immunohistochemistry

Image 2. Immunohistochemical analysis of NEURL2 staining in human brain formalin fixed paraffin embedded tissue section. The section was pre-treated using heat mediated antigen retrieval with sodium citrate buffer (pH 6.0). The section was then incubated with the antibody at room temperature and detected using an HRP conjugated compact polymer system. DAB was used as the chromogen. The section was then counterstained with haematoxylin and mounted with DPX.