

Datasheet for ABIN7298574
anti-SERPINA5 antibody (Center)[Go to Product page](#)

2 Images

Overview

Quantity:	100 µL
Target:	SERPINA5
Binding Specificity:	Center
Reactivity:	Human, Monkey
Host:	Rabbit
Clonality:	Polyclonal
Conjugate:	This SERPINA5 antibody is un-conjugated
Application:	Western Blotting (WB), Immunohistochemistry (IHC)

Product Details

Immunogen:	KLH-conjugated synthetic peptide encompassing a sequence within the center region of human PAI3.
Specificity:	Recognizes endogenous levels of PAI3 protein.
Characteristics:	Rabbit polyclonal antibody to PAI3
Purification:	The antibody was purified by immunogen affinity chromatography.

Target Details

Target:	SERPINA5
Alternative Name:	PAI3 (SERPINA5 Products)
Background:	PCI, PLANH3, PROCI, Plasma serine protease inhibitor, Acrosomal serine protease inhibitor,

Target Details

	Plasminogen activator inhibitor 3, PAI-3, PAI3, Protein C inhibitor, PCI, Serpin A5
Gene ID:	5104
UniProt:	P05154

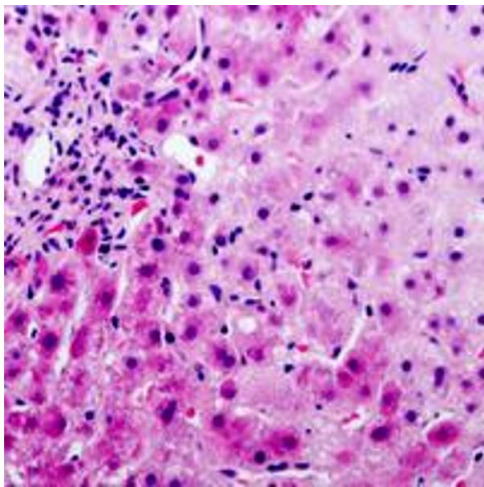
Application Details

Application Notes:	WB (1:500 - 1:1000), IH (1:100 - 1:200)
Restrictions:	For Research Use only

Handling

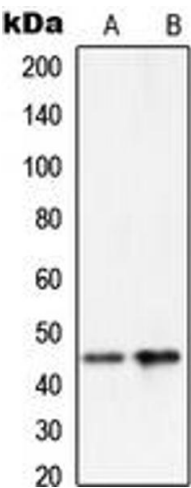
Format:	Liquid
Buffer:	Liquid in 0.42 % Potassium phosphate, 0.87 % Sodium chloride, pH 7.3, 30 % glycerol, and 0.01 % sodium azide.
Preservative:	Sodium azide
Precaution of Use:	This product contains Sodium azide: a POISONOUS AND HAZARDOUS SUBSTANCE which should be handled by trained staff only.
Storage:	-20 °C
Storage Comment:	Shipped at 4°C. Upon delivery aliquot and store at -20°C for one year. Avoid freeze/thaw cycles.
Expiry Date:	12 months

Images



Immunohistochemistry

Image 1. Immunohistochemical analysis of PAI3 staining in human liver cancer formalin fixed paraffin embedded tissue section. The section was pre-treated using heat mediated antigen retrieval with sodium citrate buffer (pH 6.0). The section was then incubated with the antibody at room temperature and detected using an HRP conjugated compact polymer system. AEC was used as the chromogen. The section was then counterstained with haematoxylin and mounted with DPX.



Western Blotting

Image 2. Western blot analysis of PAI3 expression in HeLa (A), H1299 (B) whole cell lysates.