



[Go to Product page](#)

Datasheet for ABIN7298602

## anti-SEN5 antibody (C-Term)

### 2 Images

#### Overview

|                      |                                                   |
|----------------------|---------------------------------------------------|
| Quantity:            | 100 µL                                            |
| Target:              | SEN5                                              |
| Binding Specificity: | C-Term                                            |
| Reactivity:          | Human, Rat, Monkey, Cow, Dog, Pig                 |
| Host:                | Rabbit                                            |
| Clonality:           | Polyclonal                                        |
| Conjugate:           | This SEN5 antibody is un-conjugated               |
| Application:         | Western Blotting (WB), Immunohistochemistry (IHC) |

#### Product Details

|                  |                                                                                                  |
|------------------|--------------------------------------------------------------------------------------------------|
| Immunogen:       | KLH-conjugated synthetic peptide encompassing a sequence within the C-term region of human SEN5. |
| Specificity:     | Recognizes endogenous levels of SEN5 protein.                                                    |
| Characteristics: | Rabbit polyclonal antibody to SEN5                                                               |
| Purification:    | The antibody was purified by immunogen affinity chromatography.                                  |

#### Target Details

|                   |                                                                  |
|-------------------|------------------------------------------------------------------|
| Target:           | SEN5                                                             |
| Alternative Name: | SEN5 ( <a href="#">SEN5 Products</a> )                           |
| Background:       | Sentrin-specific protease 5, Sentrin/SUMO-specific protease SEN5 |

## Target Details

Gene ID: 205564

UniProt: [Q96HI0](#)

## Application Details

Application Notes: WB (1:500 - 1:1000), IH (1:100 - 1:200)

Restrictions: For Research Use only

## Handling

Format: Liquid

Buffer: Liquid in 0.42 % Potassium phosphate, 0.87 % Sodium chloride, pH 7.3, 30 % glycerol, and 0.01 % sodium azide.

Preservative: Sodium azide

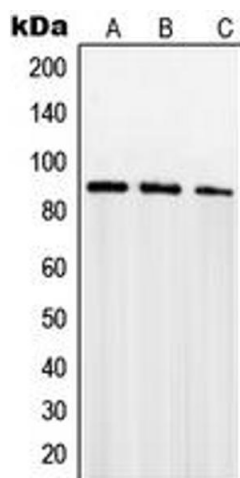
Precaution of Use: This product contains Sodium azide: a POISONOUS AND HAZARDOUS SUBSTANCE which should be handled by trained staff only.

Storage: -20 °C

Storage Comment: Shipped at 4°C. Upon delivery aliquot and store at -20°C for one year. Avoid freeze/thaw cycles.

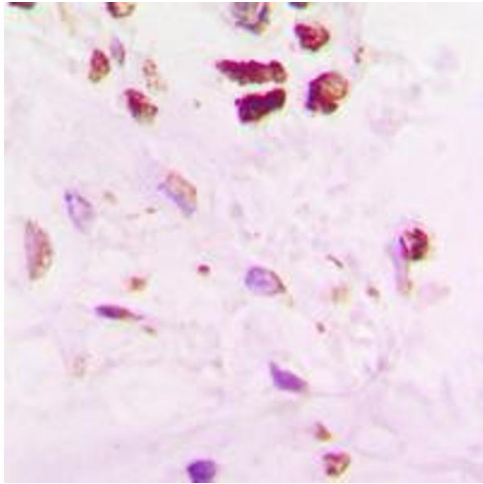
Expiry Date: 12 months

## Images



### Western Blotting

**Image 1.** Western blot analysis of SENP5 expression in PC12 (A), Jurkat (B), NIH3T3 (C) whole cell lysates.



### Immunohistochemistry

**Image 2.** Immunohistochemical analysis of SENP5 staining in human lung cancer formalin fixed paraffin embedded tissue section. The section was pre-treated using heat mediated antigen retrieval with sodium citrate buffer (pH 6.0). The section was then incubated with the antibody at room temperature and detected using an HRP conjugated compact polymer system. DAB was used as the chromogen. The section was then counterstained with haematoxylin and mounted with DPX.