



[Go to Product page](#)

Datasheet for ABIN7298606
anti-CT47A5 antibody (C-Term)

1 Image

Overview

Quantity:	100 µL
Target:	CT47A5
Binding Specificity:	C-Term
Reactivity:	Human, Monkey, Mouse, Rat
Host:	Rabbit
Clonality:	Polyclonal
Conjugate:	This CT47A5 antibody is un-conjugated
Application:	Western Blotting (WB)

Product Details

Immunogen:	KLH-conjugated synthetic peptide encompassing a sequence within the C-term region of human CT47.
Specificity:	Recognizes endogenous levels of CT47 protein.
Characteristics:	Rabbit polyclonal antibody to CT47
Purification:	The antibody was purified by immunogen affinity chromatography.

Target Details

Target:	CT47A5
Alternative Name:	CT47 (CT47A5 Products)
Target Type:	Chemical

Target Details

Background:	CT47.1, CT47.2, CT47.3, CT47.4, CT47.5, CT47.6, CT47.7, CT47.8, CT47.9, CT47.10, CT47.11, CT47.12, Cancer/testis antigen 47A, Cancer/testis antigen 47, CT47
Gene ID:	100507170, 255313, 653282
UniProt:	Q5JQC4

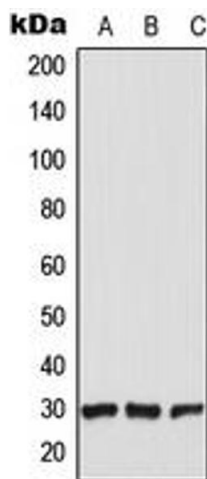
Application Details

Application Notes:	WB (1:500 - 1:1000)
Restrictions:	For Research Use only

Handling

Format:	Liquid
Buffer:	Liquid in 0.42 % Potassium phosphate, 0.87 % Sodium chloride, pH 7.3, 30 % glycerol, and 0.01 % sodium azide.
Preservative:	Sodium azide
Precaution of Use:	This product contains Sodium azide: a POISONOUS AND HAZARDOUS SUBSTANCE which should be handled by trained staff only.
Storage:	-20 °C
Storage Comment:	Shipped at 4°C. Upon delivery aliquot and store at -20°C for one year. Avoid freeze/thaw cycles.
Expiry Date:	12 months

Images



Western Blotting

Image 1. Western blot analysis of CT47 expression in HEK293T (A), Raw264.7 (B), PC12 (C) whole cell lysates.